

# SPARE PARTS

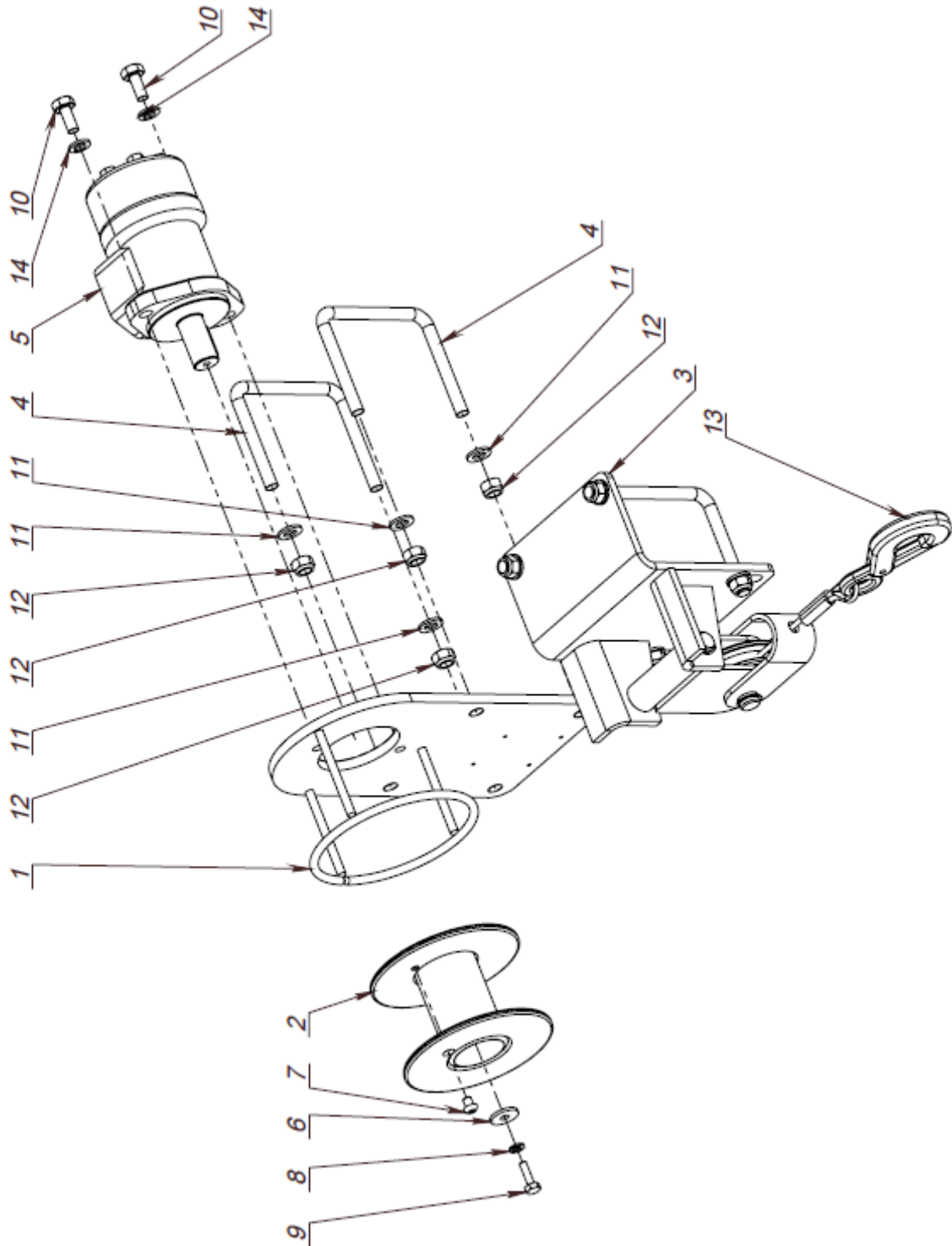
## RW600

### TABLE OF CONTENTS

1	SPARE PARTS .....	2
1.1	EXPLODED VIEW, RW600.....	2
1.2	SPARE PARTS, RW600.....	3
1.3	EXPLODED VIEW, BLOCK ADAPTER .....	4
1.4	SPARE PARTS, BLOCK ADAPTER .....	4
1.1	EXPLODED VIEW, WINCH BLOCK.....	5
1.2	SPARE PARTS, WINCH BLOCK.....	5
1.3	HYDRAULIC SCHEME, VALVE BLOCK .....	6
1.4	SPARE PARTS, HYDRAULIC SCHEME – VALVE BLOCK .....	7
2	TECHNICAL SPECIFICATIONS.....	8
2.1	MAIN PARTS & DIMENSIONS .....	8
2.2	TECHNICAL DATA.....	8
3	SERVICE BULLETIN .....	9
4	EC DECLARATION (SAMPLE).....	10

**1 SPARE PARTS**

**1.1 EXPLODED VIEW, RW600**



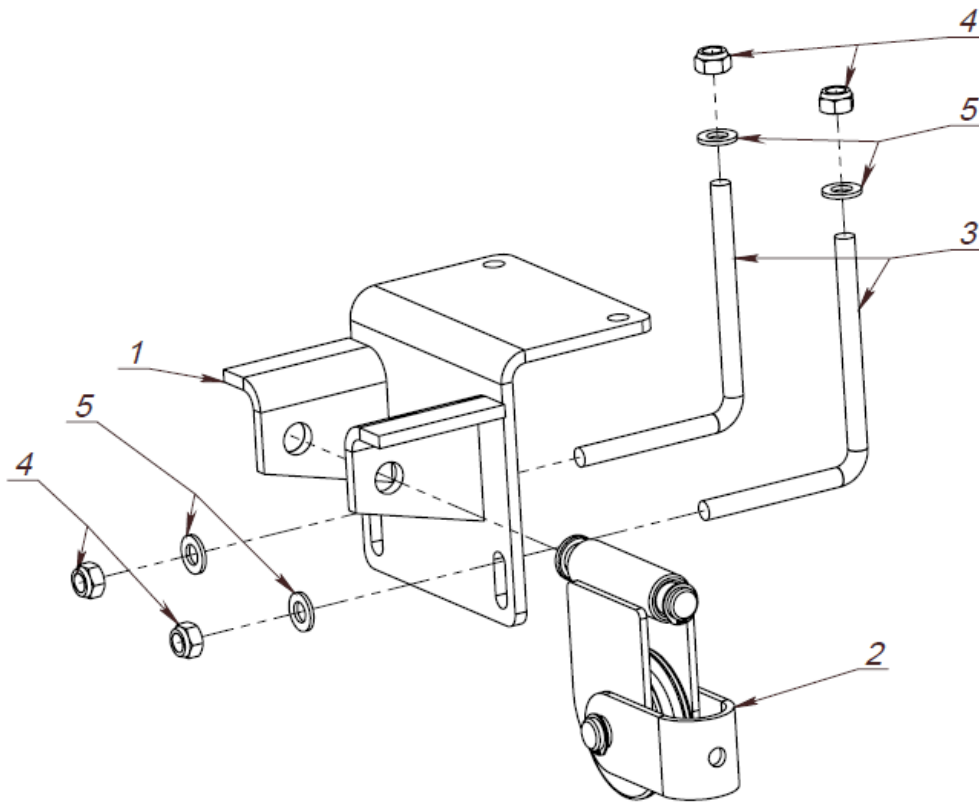
**REF: 131212**

## 1.2 SPARE PARTS, RW600

## Winch FMWA00225

ITEM NO.	PART NUMBER	DESCRIPTION	TYPE	QTY.
1	FMWS00646	Wall Winch RW 500		1
2	FMWS00645	Drum Winch RW 500		1
3	FMWA00305	Block adapter RW600 ASM		1
4	FMWP03482	U-Bolt Winch RW 600	Rnd Ø12 - 344	2
5	915315	Hydraulic motor	100cc	1
6	9082212	Washer	M8 DIN 440 R	1
7	906171	Hex. Soc. Screw	M8x10 DIN 7380	1
8	908615	Washer Spring	M8 DIN 127	1
9	906160	Bolt Hex. Cap	M8x25 DIN 933	1
10	906192	Bolt Hex. Cap	M12x25 DIN 933	2
11	908229	Washer flat	M12 DIN 125	4
12	907228	Nut Hex. Nylock	M12 DIN 985	4
13	920243	Winch wire	30m, 5mm+ hook	1
14	908625	Washer Spring	M12 DIN127	2

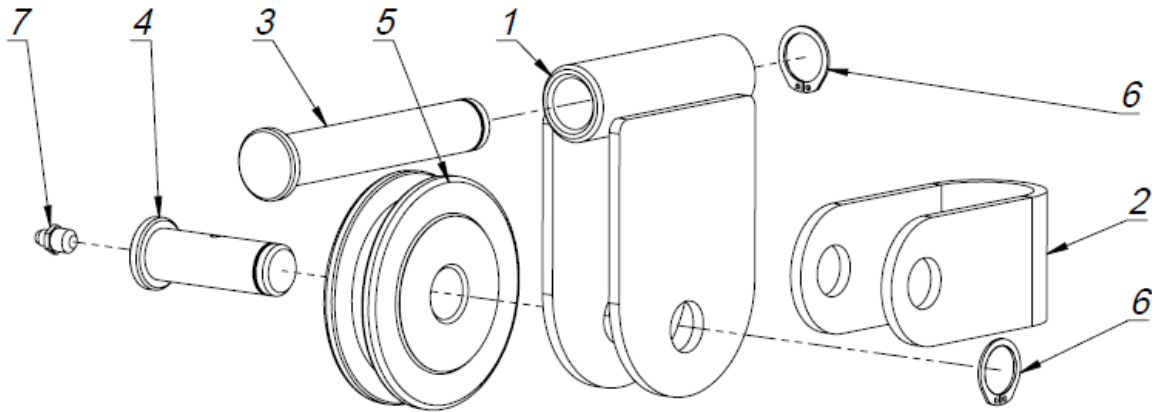
**REF: 131212**

**1.3 EXPLODED VIEW, BLOCK ADAPTER**

**REF: 131212**
**1.4 SPARE PARTS, BLOCK ADAPTER**

ITEM NO.	PART NUMBER	DESCRIPTION	TYPE	QTY.
1	FMWS00662	Block adapter WinchRW600		1
2	FMWA00203	Block		1
3	FMWP03482-01	U-bolt	RNDØ12 - 254	2
4	907228	Nut Hex. Nylock	M12 fzb DIN 985	4
5	908229	Washer flat	M12 fzb DIN 125	4

**REF: 131212**

1.1 EXPLODED VIEW, WINCH BLOCK



REF: 131212

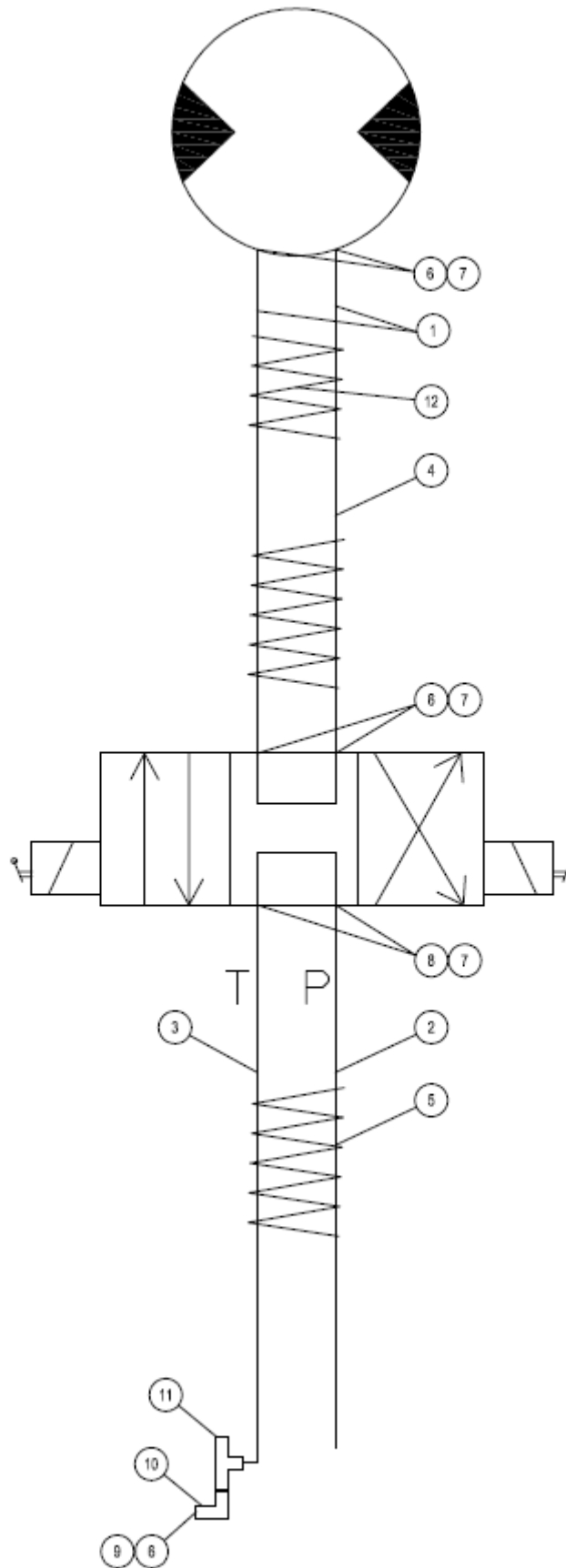
1.2 SPARE PARTS, WINCH BLOCK

FMWA00203

ITEM NO.	PART NUMBER	DESCRIPTION	TYPE	QTY.
1	FMWS00622	Bracket for winch block		1
2	FMWP03351	Lug	PLT5 - 241x50	1
3	FMWP03352	Pin	RND28 - 125	1
4	FMWP03353	Pin	RND28 - 65(60) G1/8	1
5	FMWP03354	Roller	90mm Oilon (PAOM)	1
6	911250	Lock ring	SGA 20, DIN 471	2
7	930105	Grease nipple	1/8" DIN 71412	1

REF: 131212

1.3 HYDRAULIC SCHEME, VALVE BLOCK

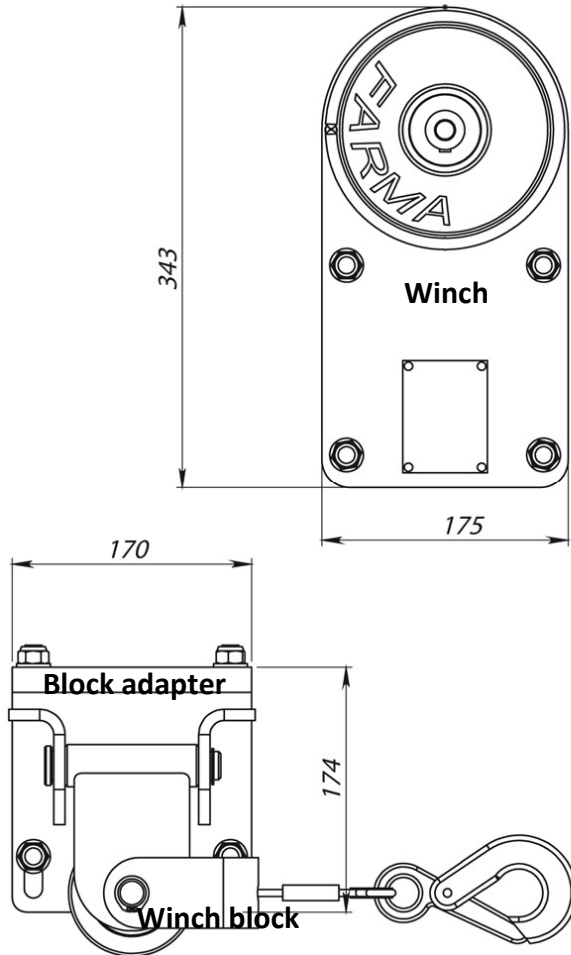


**1.4 SPARE PARTS, HYDRAULIC SCHEME – VALVE BLOCK**

<b>FMWH00015 FARMA T6</b>			
<b>Pos. No.</b>	<b>Article number</b>	<b>Description</b>	<b>Number</b>
1	FMWH00332	Hose 42010606-3/8(2650)-42010606	2
2	FMWH00333	Hose 42010808-1/2(1680)-42010808	1
3	FMWH00343	Hose 42030808-1/2(1680)-42010808	1
4	930320	Hose cover 32x3-1500	1.5
5	930330	Hose cover 50x3,5-1800	1.8
6	914718	Straight nipple 7002-06-08	5
7	914584	Rubber seal 5601-01-08 R1/2"	6
8	914720	Straight nipple 7002-08-08	2
9	914582	Rubber seal 5601-01-06 R3/8"	1
10	914758	Angle adapter adjustable 90° 7203-08-08	1
11	914788	T-nippel 7404-08-08 1/2"UFxIRxUFT	1
12	930320	Hose cover 32x3-600	0.6
	906954	Pipe plug 1/4" DIN 906	1

## 2 TECHNICAL SPECIFICATIONS

### 2.1 MAIN PARTS & DIMENSIONS



### 2.2 TECHNICAL DATA

RADIO CONTROLLED WINCH	RW600
Traction force at 175 bar	600kg
Line speed at 40 l/min	1,1 m/sec
Cable length	30m
Cable diameter	5mm
Weight, incl. winch, cable, pulley.	23kg
Radio control	2-channel



### 3 SERVICE BULLETIN

**Important information about connecting electrical and hydraulic equipment**

#### Electrical cables

Electrical cables must be connected with a separate supply through a fused terminal block from the battery.

Cable markings		
+		Brown cable (or number 1)
Earth		Blue cable (or number 2)

#### Hydraulic lines

Hydraulic hose connections should preferably be connected with a separate return tank. Avoid operating via a double acting outlet.

Line markings	
<b>Red</b>	Pressure
<b>Blue</b>	Return
<b>Yellow</b>	Brake line
<b>White</b>	Load sensing signal

Separate return tank means directly into the tank.

To avoid problems when connecting to the towing vehicle, always start with the return, then the pressure line and then in reverse order when disconnecting. Start by removing the pressure line when disconnecting.

**NOTE:** Protect your eyes and skin from oil when connecting and disconnecting!

#### 4 EC DECLARATION (SAMPLE)

### *Declaration of incorporation of partly completed machinery*

Manufacturer:

**Fors MW AS**

Tule 30

76505 Saue

Estonia

The technical documentation is compiled by **Peter Kastberg**;  
I hereby confirm that this equipment, **FARMA winch RW600**:

Trade mark: **FARMA**

Function: **Radio controlled winch**

Model: **RW600**

Type: **FW** variant: **RW600**

Serial no.: **FW0600D1100000**

Trade name: **FARMA RW600**

Manufacture year: **2013**

fulfils requirements of the **directive 2006/42/EC** and all the relevant technical documentation is compiled and applied in accordance with this Directive.

AS Fors MW undertakes to transmit relevant information on the partly completed machinery, in response to a reasoned request by the national authorities,

**Note!** The partly completed machinery must not be put into service until the final machinery which the part will be used with has been declared in conformity with the directive 2006/42/EC.

*For the guarantee and safety, it is of uttermost significance that the instruction book is read before the machine is put into service.*

Saue, Estonia

2013-12-11



Peter Kastberg  
CEO