



FARMMA®

Crane

C8.5 G2

EN_S3.0-2019W41

Original instruction

SPARE PARTS

SPARE PARTS

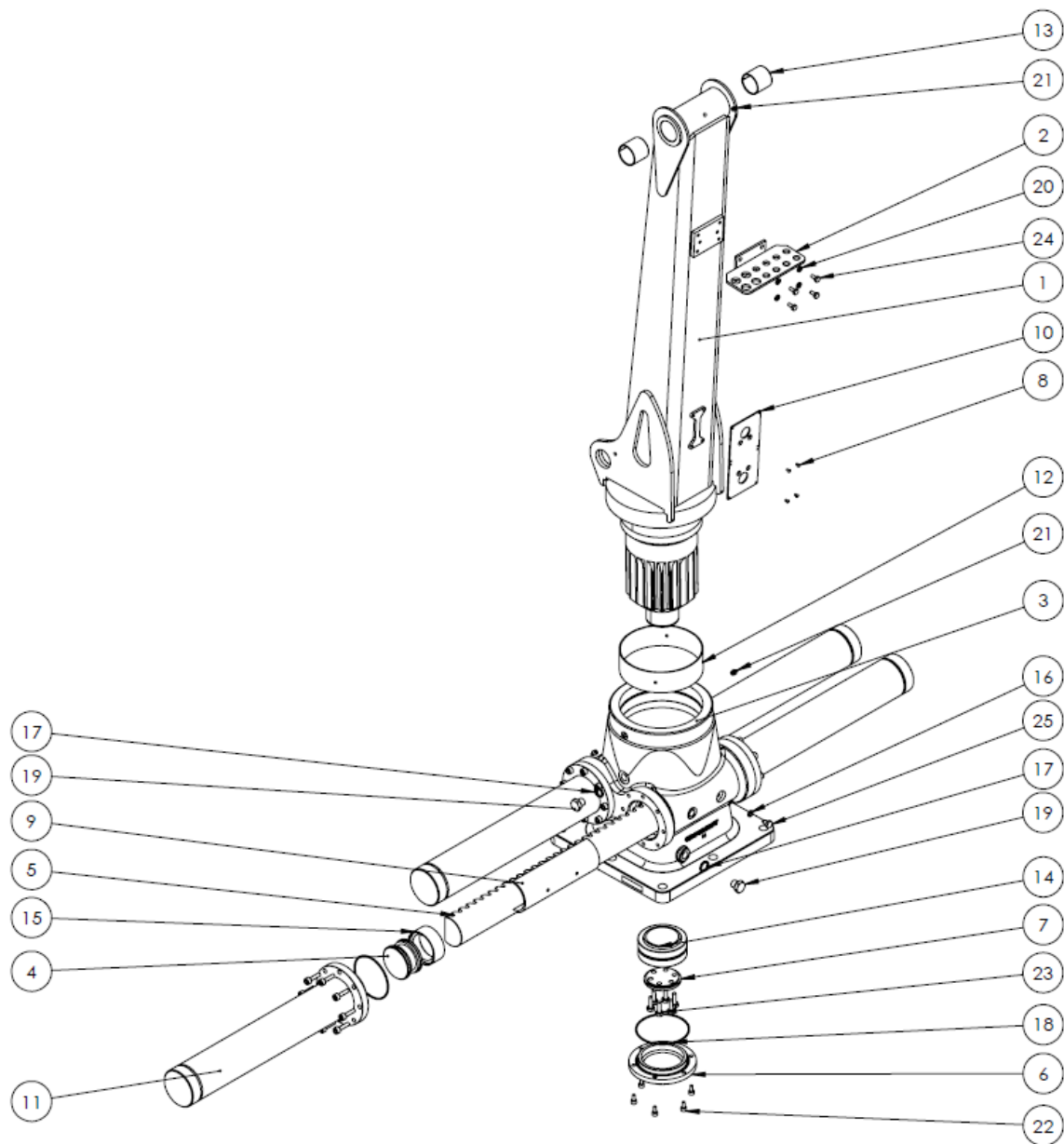
C8,5 G2

TABLE OF CONTENTS

1	SPARE PARTS	2
1.1	TURNHOUSE 16 kNm	2
1.2	MAIN BOOM.....	4
1.3	OUTERBOOM & DOUBLE TELESCOPIC BOOM EXTENSION.....	6
1.4	OUTERBOOM & DOUBLE TELESCOPIC BOOM EXTENSION (A-F).....	7
1.5	HYDRAULIC SCHEME	10
2	TECHNICAL SPECIFICATIONS	11
2.1	MAIN PARTS & DIMENSIONS.....	11
2.2	TECHNICAL DATA.....	12
2.3	LIFTING DIAGRAM	13

1 SPARE PARTS

1.1 TURNHOUSE 16 kNm

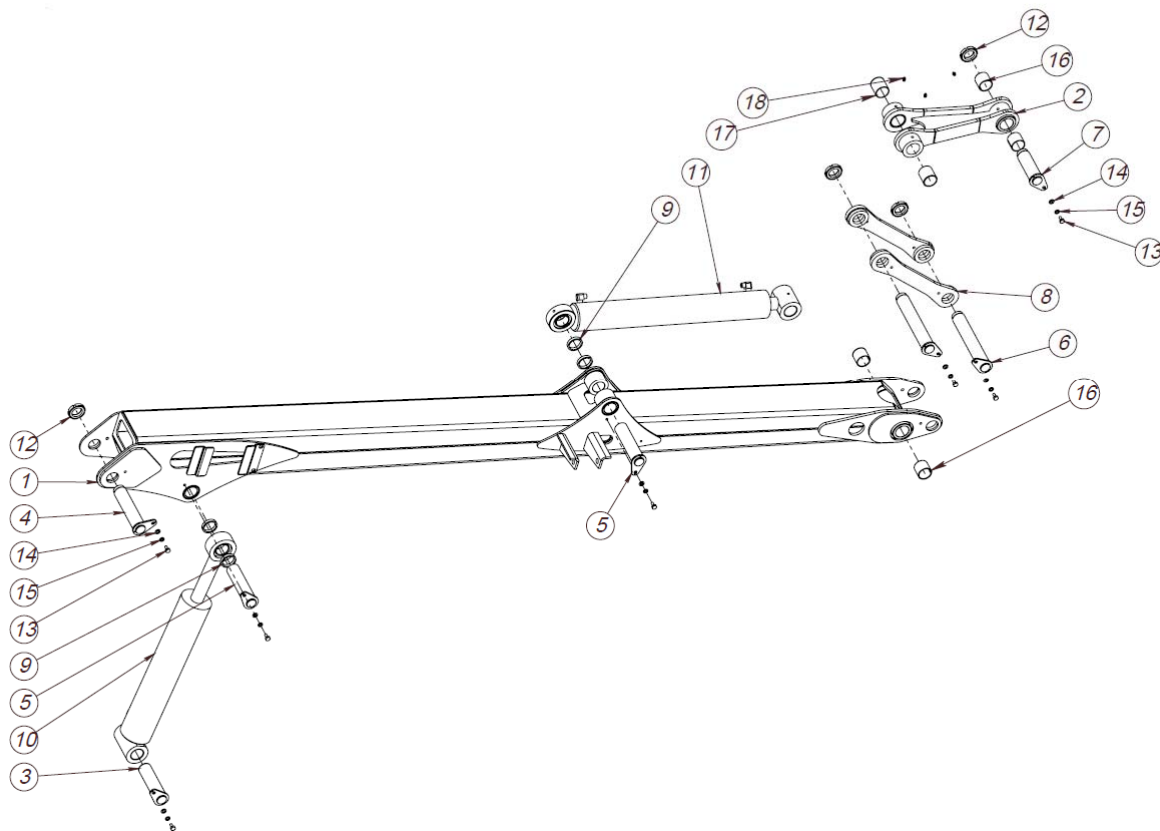


REF: 190426

TURNHOUSE 16 kNm, FMWA00417

ITEM NO.	PART NUMBER	DESCRIPTION	TYPE	QTY.
1	FMWS00126	Column C7.0/C8.5		1
2	FMWS00547	Adapter holder		1
3	FMWP04832	Body (Turnhouse 16 kNm)		1
4	FMWP00455	Piston	RndØ90 - 50	4
5	FMWP00456	Rack 16 (16kNm)	GrndØ80 - 783	2
6	FMWP00457	Cover	RndØ165 - 26	1
7	FMWP00458	Lock plate	RndØ90 - 12	1
8	907584	Blind rivet	4x8 DIN 7337	4
9	FMWP05224	Slidepad 16kNm	PA6	2
10	FMWP02295-01	Plate	PLT3-224x102	1
11	312403	Hydraulic cylinder	102/90 - 622	4
12	909118	Slide bearing	200 205 60 M DIN1494	1
13	909152	Slide Bearing	50-55-50 DIN1494	2
14	910340	Plain Bearing	GE80ES	1
15	912245	Simko sealing	90x70x22,5	4
16	914578	Rubber seal	5601-01-02	4
17	914584	Rubber seal	5601-01-08	2
18	912238	O-ring	Ø126x3 DIN 3771	1
19	914792	Plug 1/2"	7501-00-08	2
20	908615	Washer Spring	M8 fzb DIN 127	4
21	930105	Grease nipple	1/8" DIN 71412	3
22	906507	Bolt Hex. Socket	M8x16 fzb DIN 912	6
23	906175	Bolt Hex. Cap	M10x30 DIN 933	6
24	906154	Bolt Hex. Cap	M8x16 DIN 933	4
25	FMWP05194	Set Bolt Hex	17xM10x1-23 Bronze	4

REF: 190426

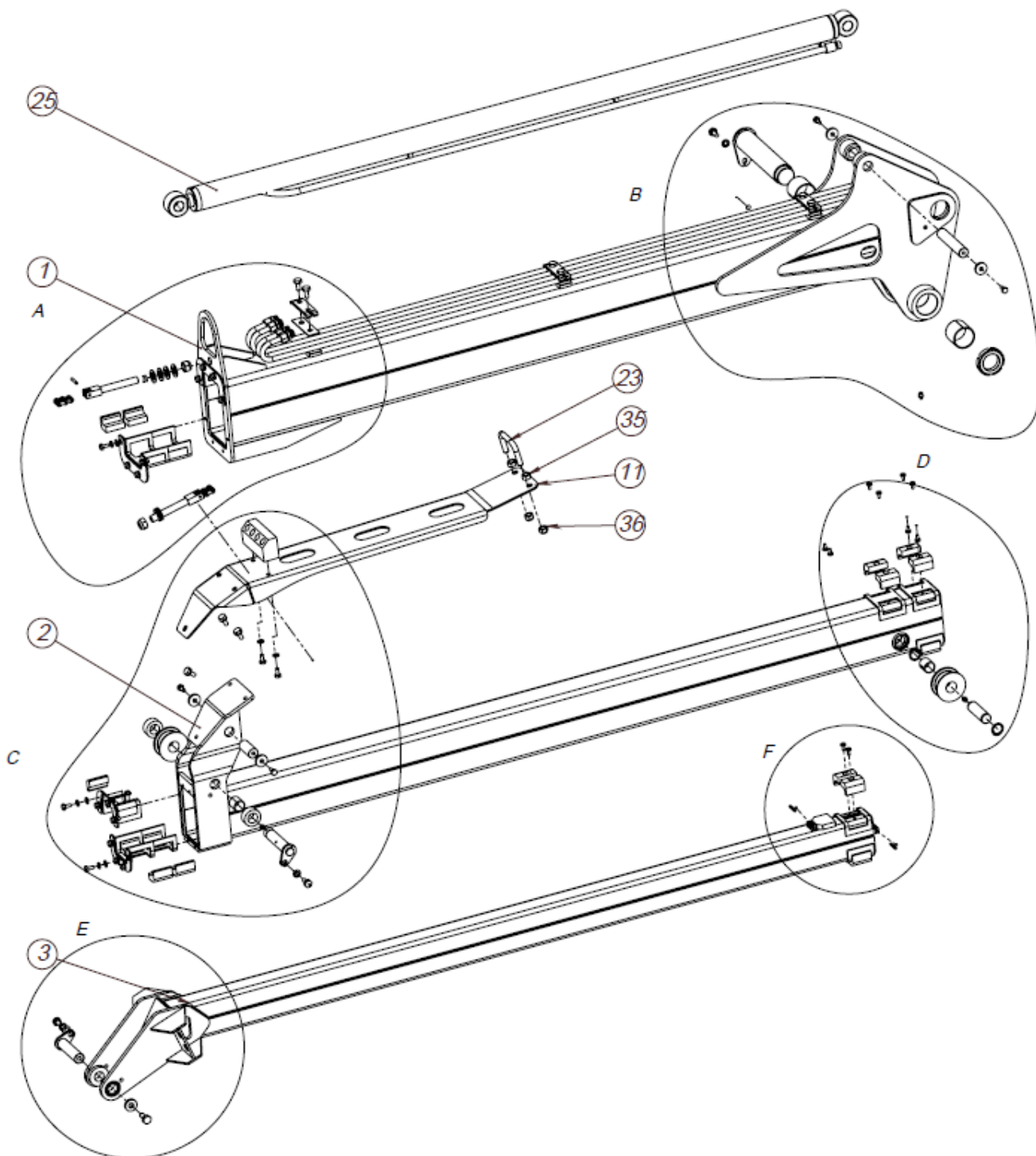
1.2 MAIN BOOM

REF: 151211
MAIN BOOM, FMWA00207

ITEM NO.	PART NUMBER	DESCRIPTION	TYPE	QTY.
1	FMWA00207	Main boom C7,0/8,5 ASM		1
2	FMWA00208	Link Inside C7,0/8,5 ASM		1
3	FMWS00144-01	Shaft	GrndØ50-196(185)	1
4	FMWS00235	Shaft	GrndØ50-247(221)	1
5	FMWS00236	Shaft	GrndØ50-212(201)	2
6	FMWS00237	Shaft	GrndØ50-320(294)	2
7	FMWS00289	Shaft	GrndØ50-172(146)	1
8	FMWS00294	Outside link C7.0/C8.5	-	2
9	FMWP00596-08	Shim	ST60x5-11	4
10	313112	Hydraulic cylinder	110/50-580	1
	37313112	Sealing kit	Hydr cyl 110/50	1
11	313114	Hydraulic cylinder	100/50-700	1
	37313114	Sealing kit	Hydr cyl 100/50	1

12	907251	Nut Lock/Round	M45x1,5-N DIN 1804	4
13	906170	Bolt Hex. Cap	M10x20 fzb DIN 933	7
14	908225	Washer flat	M10 fzb DIN 125	7
15	908620	Washer Spring	M10 fzb DIN 127	7
16	909152	Slide Bearing	50-55-50 DIN 1494	4
17	909154	Slide Bearing	50-55-60 DIN1494	2
18	930105	Lubricating nipple	1/8 " BSP DIN 71412	3

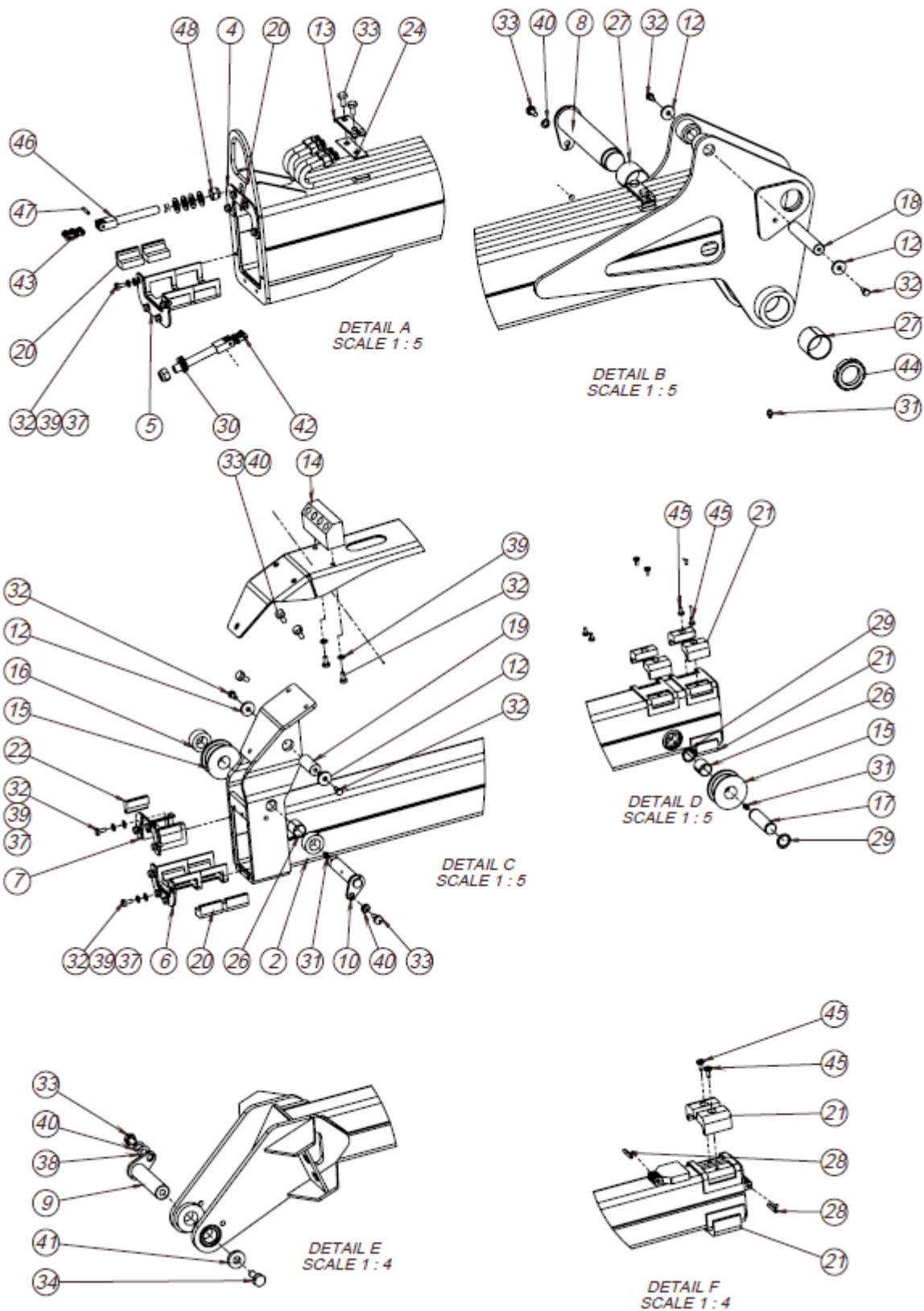
REF: 151211

1.3 OUTERBOOM & DOUBLE TELESCOPIC BOOM EXTENSION



REF: 190925

1.4 OUTERBOOM & DOUBLE TELESCOPIC BOOM EXTENSION (A-F)



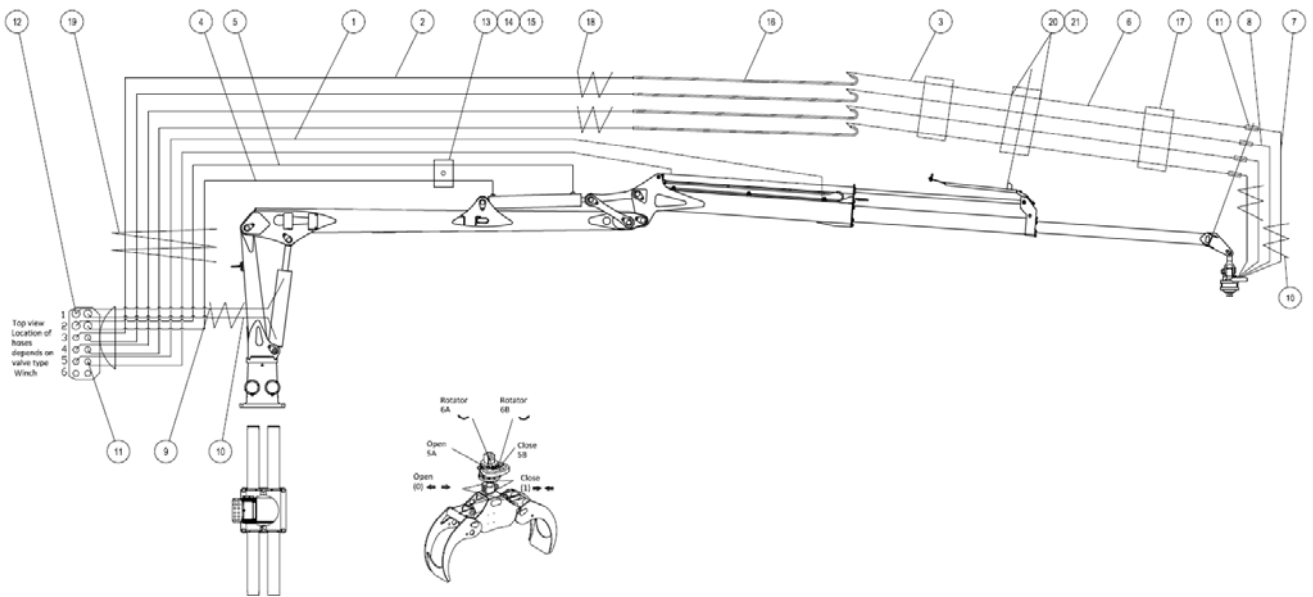
REF: 190925

OUTERBOOM & DOUBLE TELESCOPIC BOOM EXTENSION, FMWA00209

ITEM NO.	PART NUMBER	DESCRIPTION	TYPE	QTY.
1	FMWS00205	C8,5 Outer Boom		1
2	FMWS00212	C8.5 Telescopic Boom 2		1
3	FMWS00218	C8.5 Telescopic Boom 1		1
4	FMWS00222	Slidepad holder (single)	C6,6Z/C7,0/C8,5 Outerboom	1
5	FMWS00222-01	Slidepad holder (single)	C6,6Z/C7,0/C8,5 Outerboom	1
6	FMWS00223	Slidepad holder (double)	C8,5 Boom 2	1
7	FMWS00225	Slidepad holder (single)	C8,5 Boom 2	1
8	FMWS00238	Shaft	GrndØ50h9 - 251(225)	1
9	FMWS00591	Shaft	GrndØ25h9 - 109(100)	1
10	FMWS00719	Shaft	Grnd25h9 - 116(106)	1
11	FMWS00902	C8,5 Hose Bridge ASM		1
12	FMWP00519	Washer	PLT5 - D30	4
13	FMWP00618	Pipe holder	PLT6 - 100x30	3
14	FMWP00720	C8,5 distribution block	PLT40 - 124x55	1
15	FMWP00751	Chain wheel	GrndØ80 - 35	2
16	FMWP00752	Distance ring	HB45/20 - 24	2
17	FMWP00753	Pin	GrndØ25h9 - 84,6	1
18	FMWP00755	Pin	GrndØ25h9 - 130	1
19	FMWP00757	Pin	GrndØ25h9 - 56	1
20	FMWP00759	Slidepad	PLT30 - 30x50	10
21	FMWP00759-01	Slidepad	PLT30 - 30x50	10
22	FMWP00760	Slidepad	PLT16 - 30x50	2
23	FMWP01698	C8,5 clamp	RndØ12 - 190	1
24	FMWP02936	Pipe protection	PLT2 - 100x30	6
25	313100	Hydraulic cylinder	50/30 - 1455	1
	37913230	Sealing Kit 50/30		1
26	909135	Slide Bearing	25-28-30 P DIN 1494	2
27	909152	Slide Bearing	50-55-50 DIN1494	2
28	907610	Spring pin	5x30 DIN 1481	2
29	911255	Lock ring	DIN 471 - 25x1,2	2
30	920502	Disc spring	31,5x16,3x2; 4319; DIN 2093	8
31	930105	Grease nipple	1/8" DIN 71412	3

32	906154	Bolt Hex. Cap	M8x16 fzb DIN 933	22
33	906170	Bolt Hex. Cap	M10x20 fzb DIN 933	12
34	906192	Bolt Hex. Cap	M12x25 fzb DIN 933	1
35	907222	Nut	M12 DIN 934	2
36	907228	Nut Hex. Nylock	M12 fzb DIN 985	2
37	908221	Washer flat	M8 fzb DIN125	16
38	908225	Washer flat	M10 fzb DIN 125	1
39	908615	Washer Spring	M8 fzb DIN 127	18
40	908620	Washer Spring	M10 fzb DIN 127	6
41	907537	Heavy Duty Flat Washer	M12 fzb DIN 7349	1
42	940884	Leaf Chain Bottom LL1066	L=1731	1
43	940885	Leaf Chain Bottom LL1066	L=1699	1
44	907251	Nut Lock/Round M45x1,5-N	DIN 1804	1
45	906138	Bolt cross	M6x12 fzb DIN 7985H	10
46	940888	Leaf chain anchor	LL1066	2
47	9408880	Lock Pin for Anchor	5.08x29.6mm	2
48	907237	Nut Hex. Nylock	M16 fzb DIN 985	2
ITEM NO.	PART NUMBER	DESCRIPTION	TYPE	QTY.

REF: 190925

1.5 HYDRAULIC SCHEME

REF: 190426
HYDRAULIC SCHEME, FMWH00023

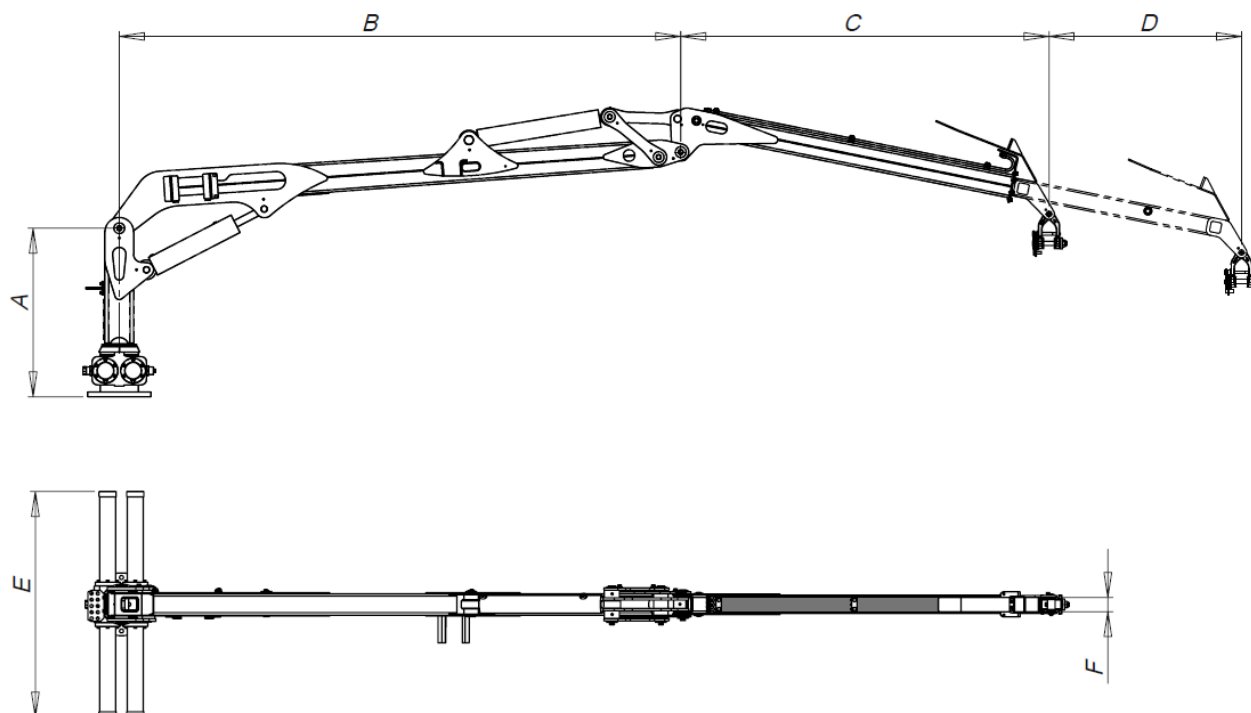
ITEM NO.	PART NUMBER	DESCRIPTION	TYPE	QTY.
1	FMWH00371	H-hose	42010606-3/8(5150)-42010606	2
2	FMWH00372	H-hose	42010606-3/8(5050)-42010606	4
3	FMWH00373	H-hose	42010606-3/8(1810)-42010606	4
4	FMWH00374	H-hose	42010808-1/2(3800)-42010808	1
5	FMWH00375	H-hose	42010808-1/2(3640)-42010808	1
6	FMWH00376	H-hose	42010606-3/8(1790)-42010606	4
7	FMWH00377	H-hose	42010606-3/8(710)-42030606	2
8	FMWH00378	H-hose	42010606-3/8(690)-42030606	2
9	FMWH00379	H-hose	42010808-1/2(870)-42030808	1
10	FMWH00380	H-hose	42010808-1/2(1400)-42010808	1
11	914750	Cartridge nipple	7090-06-06; G3/8"Mx3/8"M	10
12	914752	Cartridge nipple	7090-08-08; G1/2"Mx1/22M	4
13	914544	Clip double	5390-43-20; 2xd20	1
14	914546	Cover plate	5394-13-01; GR3	1
15	906165	Bolt Hex. Cap	M8x40 DIN 933	1
16	FMWA00289	Hydraulic pipe	d12x1,5 L=1700	4
17	914630	PVC water hose	1405-00-48; 75mm	2,5m
18	930320	SPIRO PIPE	ø 32x3 mm yellow	7m

19	930330	SPIRO PIPE	ø 50x3,5 mm yellow	1,5m
20	914716	Straight nipple	7002-06-06; 3/82Mx3/8"M	8
21	914582	Rubber seal	5601-01-06; R3/8"	8

REF: 190426

2 TECHNICAL SPECIFICATIONS

2.1 MAIN PARTS & DIMENSIONS



Picture: Boom system with telescopic boom extension

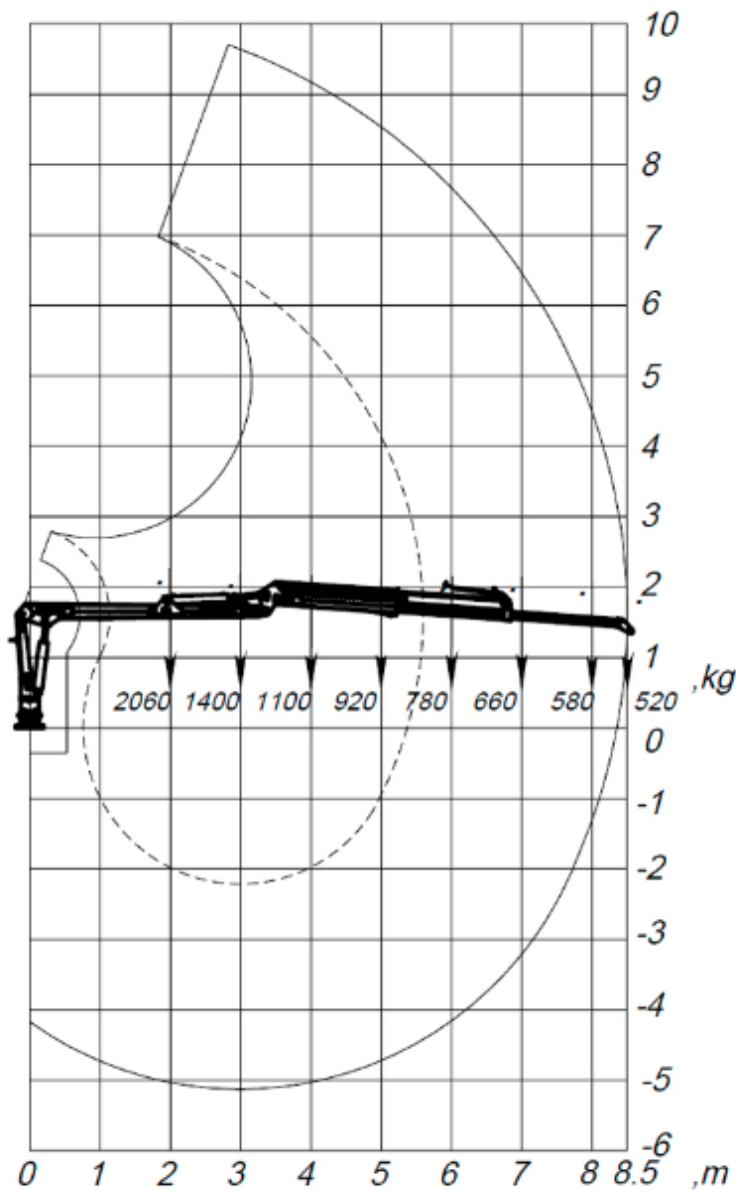
ITEM	DESCRIPTION
A	Turnhouse
B	Main boom
C	Outerboom
D	Double telescopic boom extension

ITEM	DIMENSIONS (mm)
A	1595
B	3500
C	2295
D	2900
E	1465
F	60

2.2 TECHNICAL DATA

FOREST CRANE	C8,5 G2
Lifting torque net, kNm	43
Slewing torque, kNm	16
Slewing angle, °	380
Reach, m	8,5
Telescopic stroke length, m	2,9
Recommended flow, l/min	40-70
Working pressure, bar	190
Weight of loader, kg <ul style="list-style-type: none"> • excl. Grapple, rotator, link 	850
Weight, kg incl. FG 0.20, rotator,link	990
Weight, kg incl. FG 0.24, rotator,link	1025
Lifting force kg/max reach <ul style="list-style-type: none"> • excl. Grapple, rotator, link 	520

2.3 LIFTING DIAGRAM



REF: WEB 190426