



**FARMA**®

**FARMA CRANE**

**C7,0 G2**

EN\_S2.0-2019W18

Original instruction

**SPARE PARTS**

# SPARE PARTS

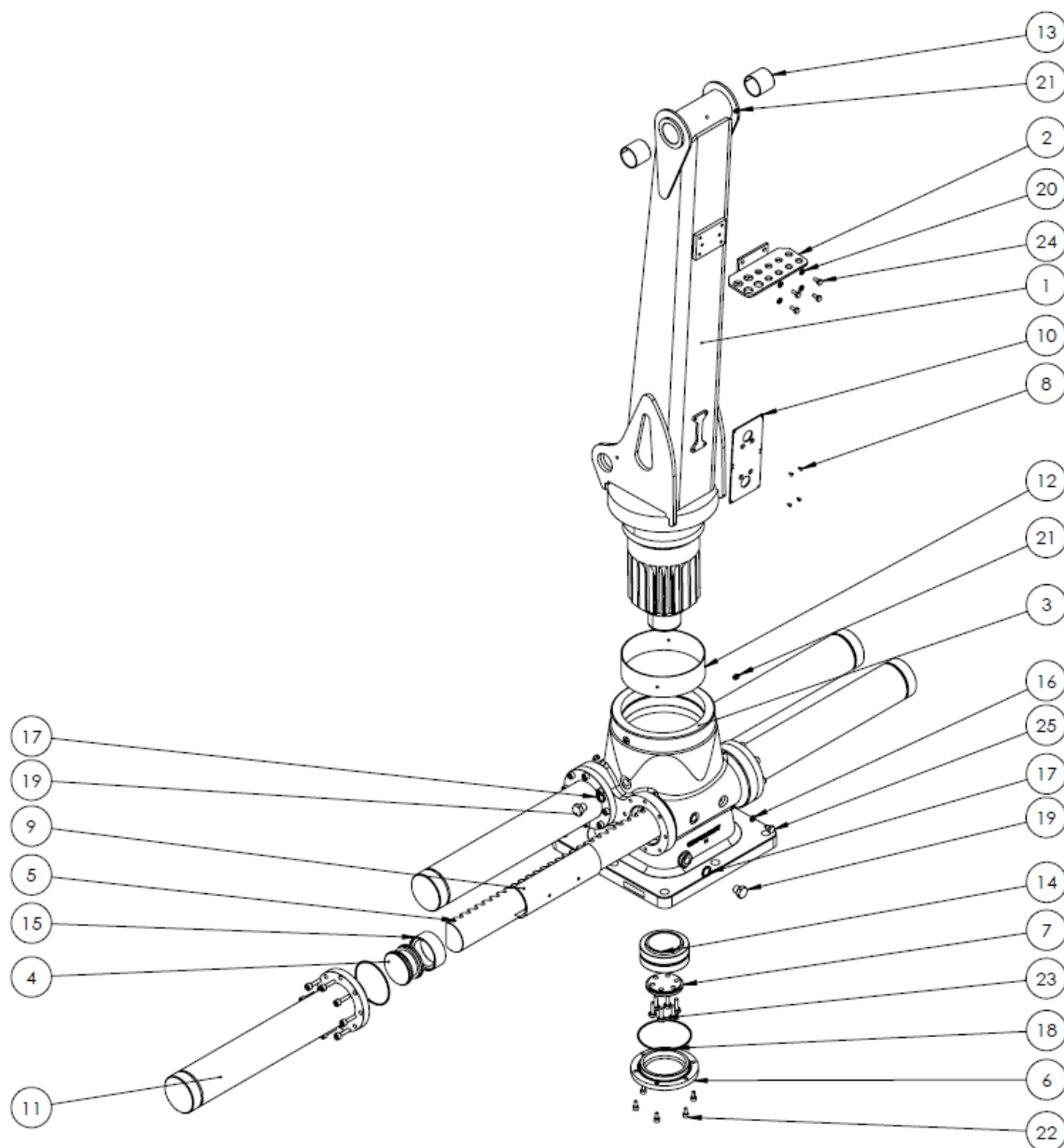
## C7,0 G2

### TABLE OF CONTENTS

1	SPARE PARTS .....	2
1.1	TURNHOUSE, 16kNm V2 .....	2
1.2	MAIN BOOM.....	4
1.3	OUTERBOOM & TELESCOPIC BOOM EXTENSION .....	6
1.4	HYDRAULIC SCHEME .....	8
2	TECHNICAL SPECIFICATIONS .....	10
2.1	MAIN PARTS & DIMENSIONS.....	10
2.2	TECHNICAL DATA.....	11
2.3	LIFTING DIAGRAM .....	11
3	EC-DECLARATION OF CONFORMITY (SAMPLE).....	12

**1 SPARE PARTS**

**1.1 TURNHOUSE, 16kNm V2**



**REF: 190426**

**TURNHOUSE 16kNm V2, FMWA00417**

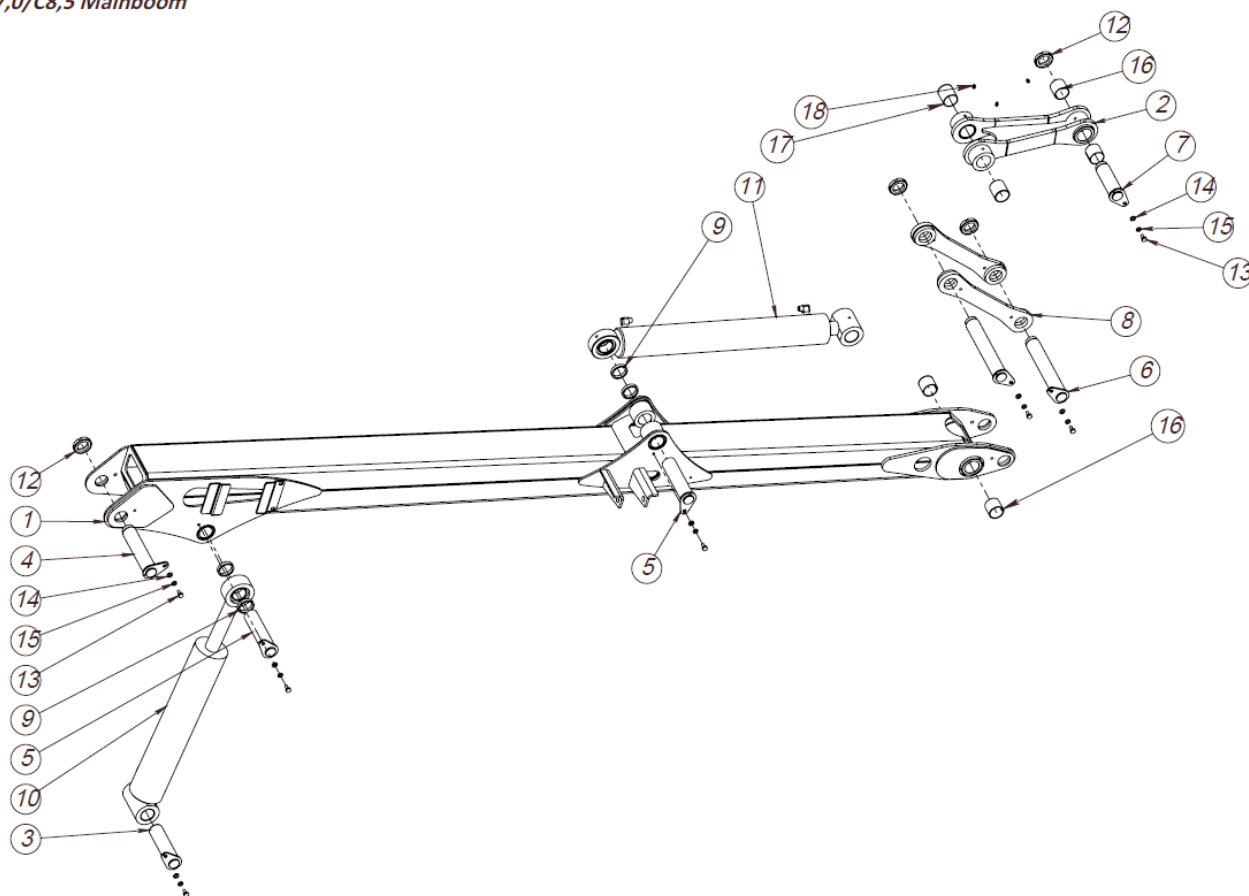
ITEM NO.	PART NUMBER	DESCRIPTION	TYPE	QTY.
1	FMWS00126	Column C7.0/C8.5		1
2	FMWS00547	Adapter holder		1
3	FMWP04832	Body (Turnhouse 16 kNm)		1
4	FMWP00455	Piston	RndØ90 - 50	4
5	FMWP00456	Rack 16 (16kNm)	GrndØ80 - 783	2
6	FMWP00457	Cover	RndØ165 - 26	1
7	FMWP00458	Lock plate	RndØ90 - 12	1
8	907584	Blind rivet	4x8 DIN 7337	4
9	FMWP05224	Slidepad 16kNm	PA6	2
10	FMWP02295-01	Plate	PLT3-224x102	1
11	312403	Hydraulic cylinder	102/90 - 622	4
12	909118	Slide bearing	200 205 60 M DIN1494	1
13	909152	Slide Bearing	50-55-50 DIN1494	2
14	910340	Plain Bearing	GE80ES	1
15	912245	Simko sealing	90x70x22,5	4
16	914578	Rubber seal	5601-01-02	4
17	914584	Rubber seal	5601-01-08	2
18	912238	O-ring	Ø126x3 DIN 3771	1
19	914792	Plug 1/2"	7501-00-08	2
20	908615	Washer Spring	M8 fzb DIN 127	4
21	930105	Grease nipple	1/8" DIN 71412	3
22	906507	Bolt Hex. Socket	M8x16 fzb DIN 912	6
23	906175	Bolt Hex. Cap	M10x30 DIN 933	6
24	906154	Bolt Hex. Cap	M8x16 DIN 933	4
25	FMWP05194	Set Bolt Hex	17xM10x1-23 Bronze	4

**REF: 190426**

Original instruction

## 1.2 MAIN BOOM

C7,0/C8,5 Mainboom



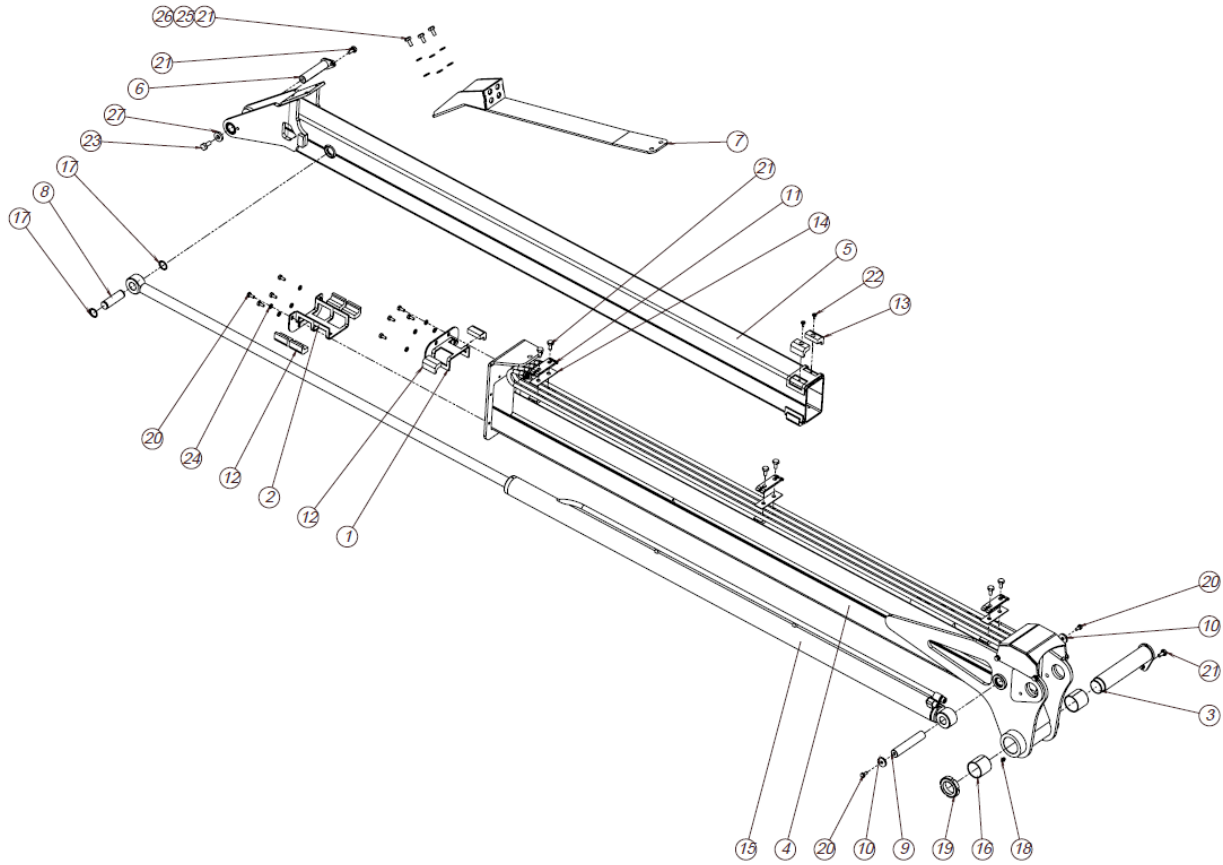
REF: 190426

*Original instruction*
**MAIN BOOM**

ITEM NO.	PART NUMBER	DESCRIPTION	TYPE	QTY.
1	FMWA00207	Main boom C7,0/8,5 ASM		1
2	FMWA00208	Link Inside C7,0/8,5 ASM		1
3	FMWS00144-01	Shaft	GrndØ50-196(185)	1
4	FMWS00235	Shaft	GrndØ50-247(221)	1
5	FMWS00236	Shaft	GrndØ50-212(201)	2
6	FMWS00237	Shaft	GrndØ50-320(294)	2
7	FMWS00289	Shaft	GrndØ50-172(146)	1
8	FMWS00294	Outside link C7.0/C8.5	-	2
9	FMWP00596-08	Shim	ST60x5-11	4
10	313112	Hydraulic cylinder	110/50-580	1
	37313112	Sealing kit	Hydr cyl 110/50	1
11	313114	Hydraulic cylinder	100/50-700	1
	37313114	Sealing kit	Hydr cyl 100/50	1
12	907251	Nut Lock/Round	M45x1,5-N DIN 1804	4
13	906170	Bolt Hex. Cap	M10x20 fzb DIN 933	7
14	908225	Washer flat	M10 fzb DIN 125	7
15	908620	Washer Spring	M10 fzb DIN 127	7
16	909152	Slide Bearing	50-55-50 DIN 1494	4
17	909154	Slide Bearing	50-55-60 DIN1494	2
1	930105	Lubricating nipple	1/8 " BSP DIN 71412	3

**REF: 190426**

**1.3 OUTERBOOM & TELESCOPIC BOOM EXTENSION**



**REF: 190426**

**OUTERBOOM & TELESCOPIC BOOM EXTENSION**

ITEM NO.	PART NUMBER	DESCRIPTION	Type	QTY.
1	FMWS00222	Slidepad holder (single)	C6,6Z/C7,0/C8,5 Outerboom	1
2	FMWS00222-01	Slidepad holder (single)	C6,6Z/C7,0/C8,5 Outerboom	1
3	FMWS00238	Shaft	GrndØ50h9 - 251(225)	1
4	FMWS00239	Outerboom C7.0		1
5	FMWS00240	Telescopic boom C7.0		1
6	FMWS00591-02	Shaft	GrndØ25h9 - 118(109)	1
7	FMWS00625	Hose holder C7,0		1
8	FMWP00508	Pin	GrndØ25 - 85,6	1
9	FMWP00518	Pin	GrndØ25 - 136	1
10	FMWP00519	Washer	PLT5 - D30	2

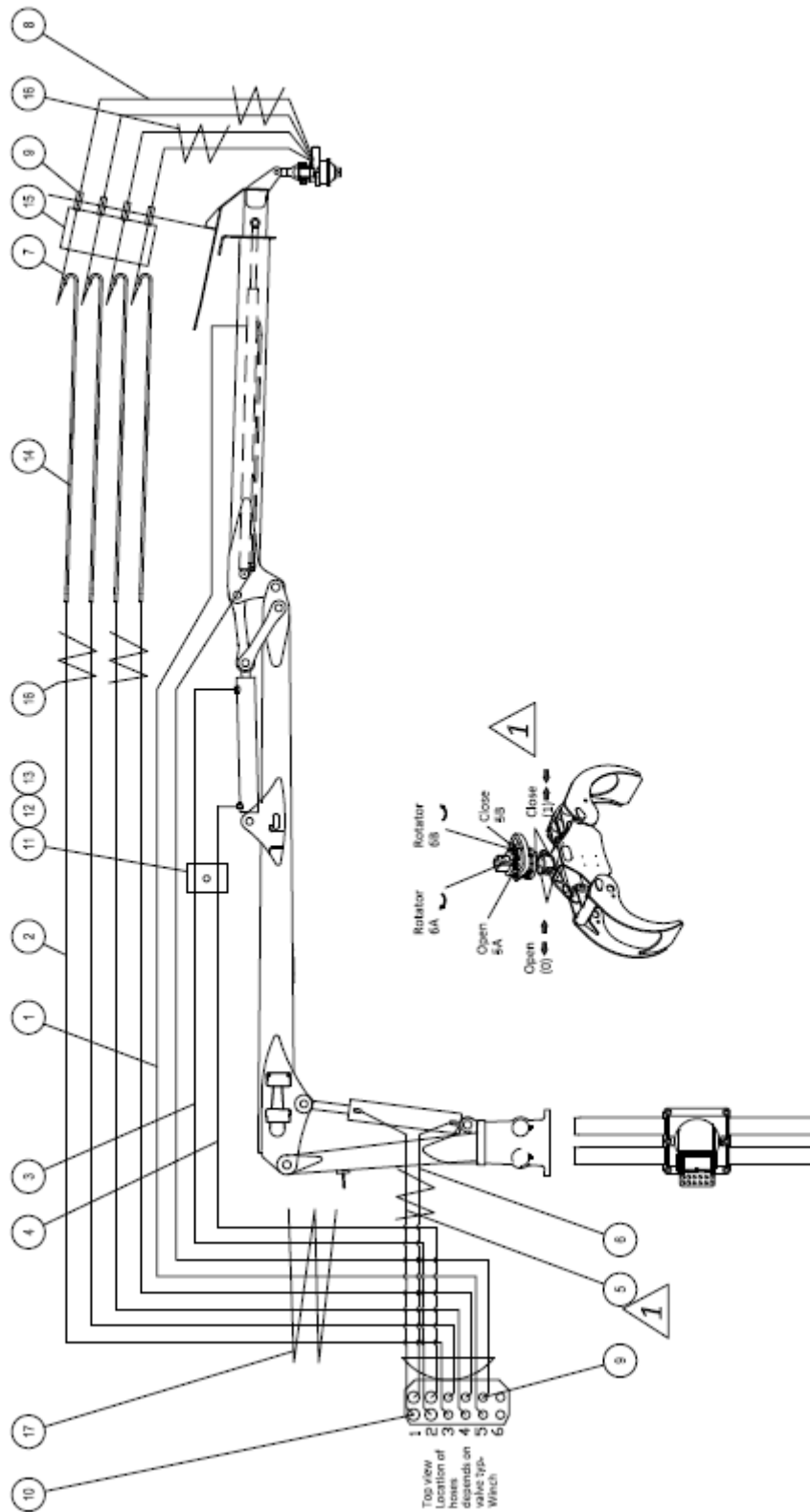
11	FMWP00618	Pipe holder	PLT6 - 100x30	3
12	FMWP00759	Slidepad	PLT30 - 30x50	6
13	FMWP00759-01	Slidepad	PLT30 - 30x50	4
14	FMWP02936	Pipe protection	PLT2 - 100x30	6
15	313100	Hydraulic cylinder	50/30 - 1455	1
	37313107	Sealing kit	Hydr cyl 50/30	1
16	909152	Slide Bearing	50-55-50 DIN1494	2
17	911255	Lock ring	DIN 471 - 25x1,2	2
18	930105	Grease nipple	1/8" DIN 71412	1
19	907251	Nut Lock/Round M45x1,5-N	M45x1,5 DIN 1804	1
20	906154	Bolt Hex. Cap	M8x16 DIN 933	10
21	906170	Bolt Hex. Cap	M10x20 fzb DIN 933	11
22	906138	Bolt Cross	M6x12 DIN 7985	4
23	906192	Bolt Hex. Cap	M12x25 fzb DIN 933	1
24	908615	Washer Spring	M8 fzb DIN 127	8
25	908620	Washer Spring	M10 fzb DIN 127	3
26	908225	Washer flat	M10 fzb DIN 125	3
27	907537	Heavy duty flat washer	M12 fzb DIN 7349	1
28	FMWA00289-01	Hydraulic pipe	C6.3/C7.0/C8.5	1

**REF: 190426**



Original instruction

1.4 HYDRAULIC SCHEME



REF: 190426

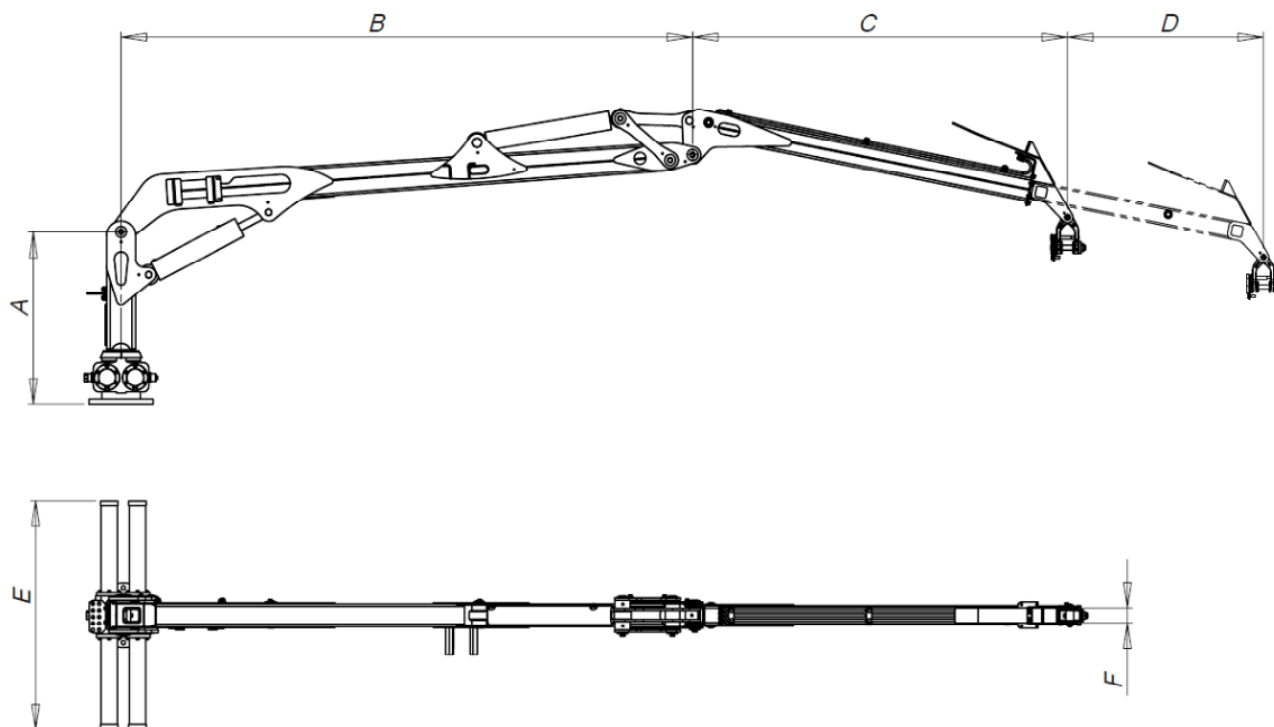
*Original instruction*
**HYDRAULIC SCHEME, FMWH00003**

ITEM NO.	PART NUMBER	DESCRIPTION	TYPE	QTY.
1	FMWH00371	H-hose	42010606-3/8(5150)-42010606	2
2	FMWH00372	H-hose	42010606-3/8(5050)-42010606	4
3	FMWH00374	H-hose	42010808-1/2(3800)-42010808	1
4	FMWH00375	H-hose	42010808-1/2(3640)-42010808	1
5	FMWH00379	H-hose	42010808-1/2(870)-42030808	1
6	FMWH00380	H-hose	42010808-1/2(1400)-42010808	1
7	FMWH00341	H-hose	42010606-3/8(1750)-42010606	4
8	FMWH00342	H-hose	42010606-3/8(1080)-42030606	4
9	914750	H-hose	7090-06-06; G3/8"Mx3/8"M	10
10	914752	Cartridge nipple	7090-08-08; G1/2"Mx1/22M	4
11	914544	Clip double	5390-43-20; 2xd20	1
12	914546	Cover plate	5394-13-01; GR3	1
13	906165	Bolt Hex. Cap	M8x40 DIN 933	1
14	FMWA00289-01	Hydraulic pipe	d12x1,5 L=2060	4
15	914630	PVC water hose	1405-00-48; 75mm	1,75m
16	930320	SPIRO PIPE	∅ 32x3 mm yellow	6,3m
17	930330	SPIRO PIPE	∅ 50x3,5 mm yellow	1,2m

**REF: 190426**

## 2 TECHNICAL SPECIFICATIONS

### 2.1 MAIN PARTS & DIMENSIONS



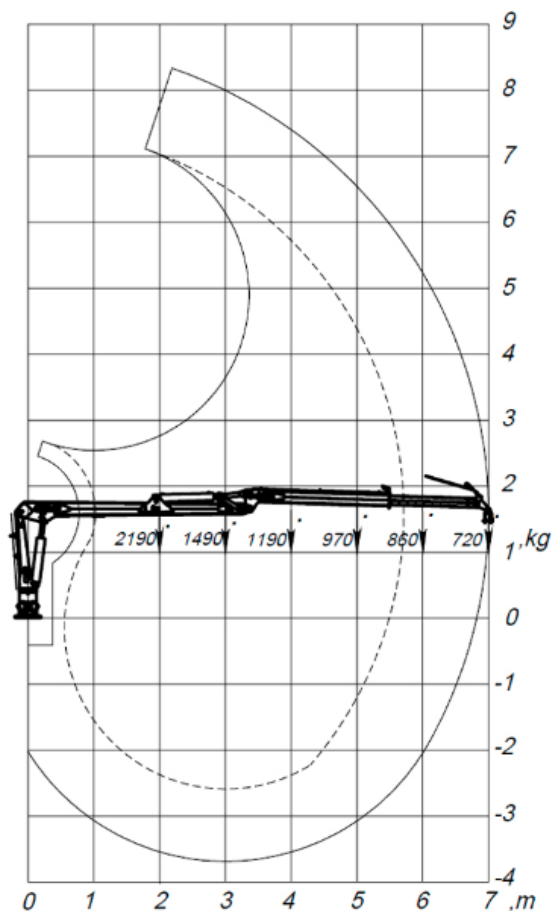
Picture: Boom system with telescopic boom extension

ITEM	DESCRIPTION
A	Turnhouse
B	Main boom
C	Outerboom
D	Telescopic boom extension

ITEM	DIMENSIONS (mm)
A	1595
B	3500
C	2410
D	1285
E	1465
F	60

*Original instruction*
**2.2 TECHNICAL DATA**

FOREST CRANE	C7,0 G2
Lifting capacity net, kNm	49
Slewing torque, kNm	16
Slewing angle, °	380
Reach, m	7,0
Telescopic stroke length, m	40-70
Recommended flow, l/min	1,3
Working pressure, bar	190
Weight of loader, kg	810
• excl. Grapple, rotator, link	
Weight, kg incl. FG 0.20, rotator,link	950
Weight, kg incl. FG 0.24, rotator,link	985
Lifting force kg/max reach	720
• excl. Grapple, rotator, link	

**2.3 LIFTING DIAGRAM**


### 3 EC-DECLARATION OF CONFORMITY (SAMPLE)

#### *EC Declaration of Conformity of the Machinery*

Manufacturer:

**Fors MW AS**

Tule 30

76505 Saue

Estonia

The technical file is compiled by **CEO**;

I hereby confirm that this equipment, **FARMA forestry crane C7,0**:

Trade mark: **FARMA**

Function: **Forestry crane**

Model: **C7,0**

Type: **FL** variant: **C7,0**

Serial no.: **FL0070xxxxxxxx**

Trade name: **FARMA C7,0**

• Type: **FG** variant: **0.20**

Serial no.: **FG0020xxxxxxxx**

Manufacture year: **xxxx**

is manufactured accordingly to demands in **directive 2006/42/EC** and therefore can be used mounted together with other equipment to provide a complete machine.

The equipment can't be used before the machine or the formation that it will take place in, is accordingly to the demands of the EC Machinery directive.

For the guarantee and safety, it is of uttermost significance that the instruction book is read before the machine is put into service.

Saue, Estonia

2019-04-29

sign

CEO