



FARMA®

Crane

C6.7 G3

EN_S1.5-2019W41

Original instruction

SPARE PARTS

SPARE PARTS

C6,7 G3

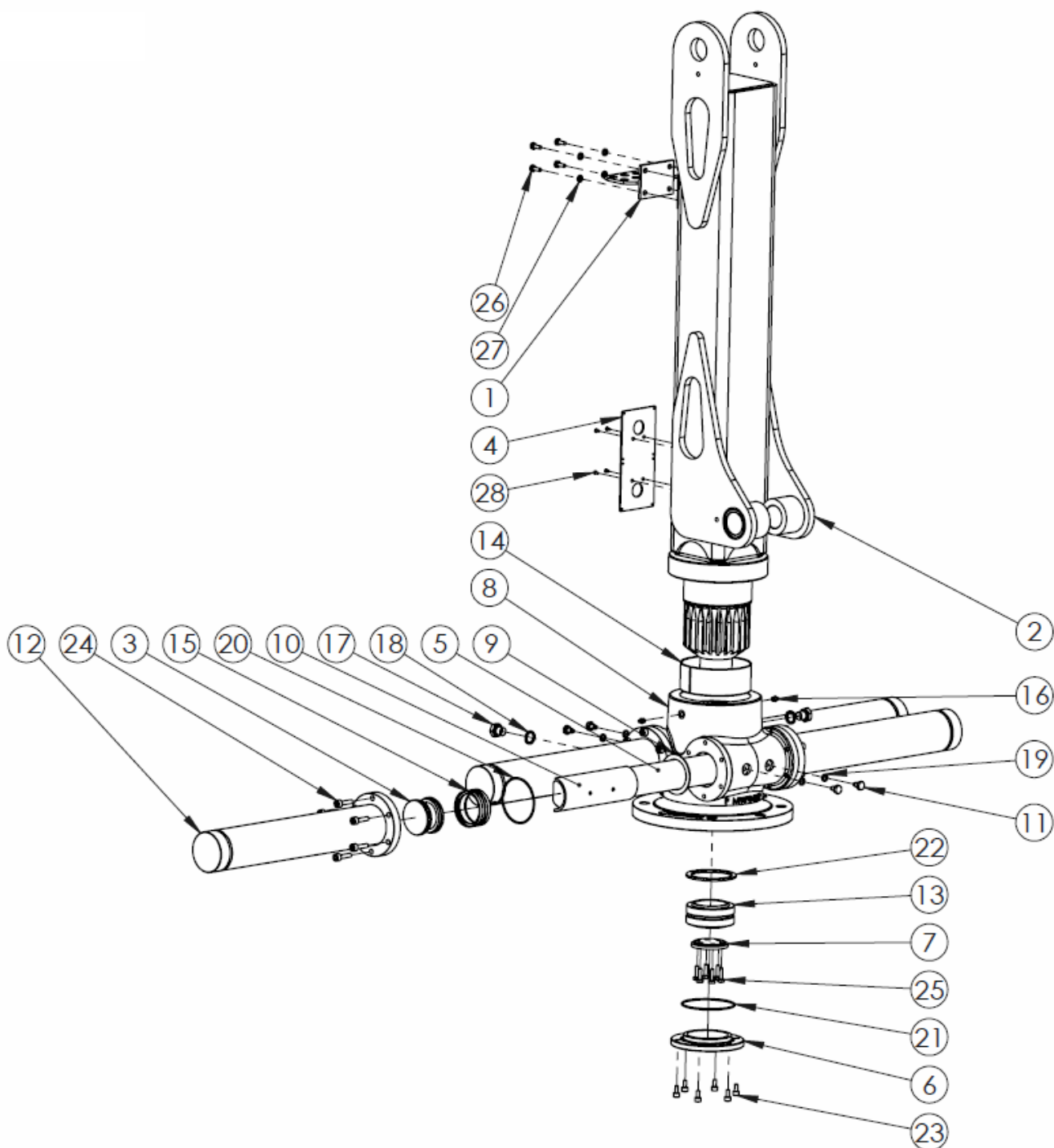
TABLE OF CONTENTS

1	SPARE PARTS	3
1.1	10 kNm TURNHOUSE ASM.....	3
1.2	MAIN BOOM C6,7 G3 ASM.....	5
1.3	OUTERBOOM C6,7 G3 ASM.....	7
1.4	LINK WITH BRAKE C6,7 G3 ASM	10
2	HYDRAULIC SCHEME C6,7 G3.....	11
3	TECHNICAL SPECIFICATIONS	12
3.1	MAIN PARTS & DIMENSIONS.....	12
3.2	TECHNICAL DATA.....	13
3.3	LIFTING DIAGRAM	13

Original instruction

1 SPARE PARTS

1.1 10 kNm TURNHOUSE ASM



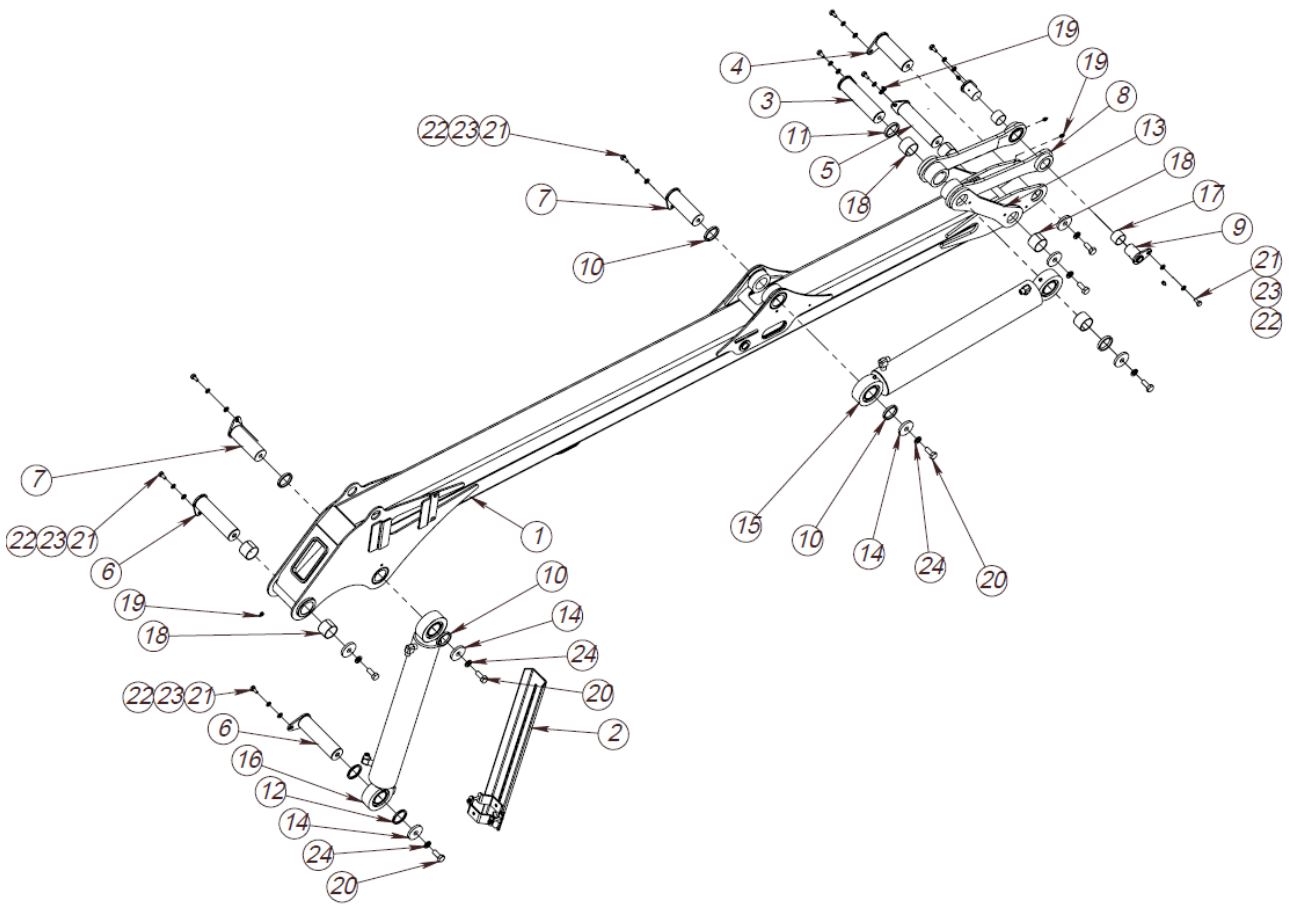
REF: 170831

Turnhouse 10kNm ASM, C6,7 G3 (FMWA00481)

ITEM NO.	PART NUMBER	DESCRIPTION	TYPE	QTY.
1	FMWS00207	Adapter holder	C4,6-C6,3	1
2	FMWS00891	Column C6.7		1
3	FMWP00591	Piston 80		4
4	FMWP02295-01	Plate	PLT3 - 224x102	1
5	FMWP04123	Rack 10 kNm		2
6	FMWP04124	Cover	RND160 - 23	1
7	FMWP04125	Washer	D80	1
8	FMWP04129	Body	10 kNm	1
9	FMWP04682	Washer	PLT2 - 89x89	4
10	FMWP04843	Slidepad 10kNm	PA6	2
11	FMWP05194	Set bolt	HEX17xM10x1 - 23	4
12	312401	Slewing cylinder 10 kNm	80-438	4
13	910330	Bearing	GE 70 ES	1
14	909119	Slide bearing	150-155-60	1
15	912235	Simco sealing	80x60x22,4	4
16	930105	Grease nipple	1/8" DIN 71412	2
17	914792	Plug 1/2"	7501-00-08	2
18	914584	Rubber seal	8.01.5601	2
19	914578	Rubber seal	5601-01-02; 1/8"	4
20	912314	O-ring	96,0x3	4
21	912237	O-ring	112x3	1
22	911141	Lock ring	105x4 DIN 472	1
23	916507	Bolt Hex. Socket	M8x16 DIN 912	6
24	906528	Bolt Hex. Socket	M10x35 DIN 912	24
25	906160	Bolt Hex. Cap	M8x25 fzb DIN 933	6
26	906158	Bolt Hex. Cap	M8x20 fzb DIN 933	4
27	908615	Washer Spring	M8 fzb DIN 127	4
28	907584	Blind rivet	d4x8	4

REF: 170831

1.2 MAIN BOOM C6,7 G3 ASM



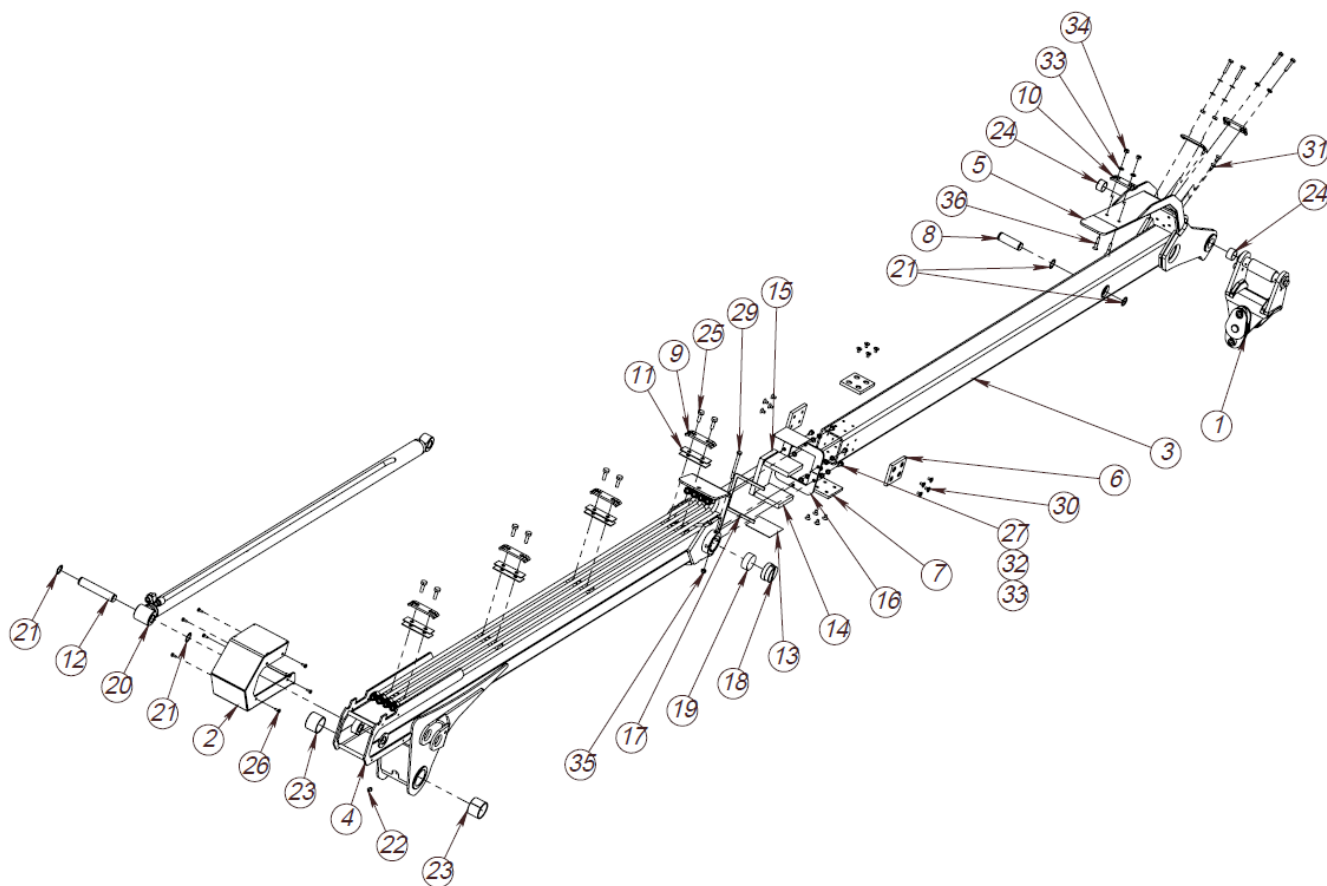
REF: 190927

Main boom ASM, C6,7 G3 (FMWA00480)

ITEM NO.	PART NUMBER	DESCRIPTION	TYPE	QTY.
1	FMWA00480	Mainboom C6,7 ASM		1
2	FMWA00512	Link C6,7 cylinder cover		1
3	FMWS00144-02	Shaft	GrndØ50-207(196)	2
4	FMWS00144-03	Shaft	GrndØ50-161(150)	1
5	FMWS00144-04	Shaft	GrndØ50-207(196)	2
6	FMWS00147	Shaft	GrndØ50-203(192)	2
7	FMWS00149-01	Shaft	GrndØ50-153(142)	2
8	FMWS00938	Link C6.7		2
9	FMWS00939	Shaft	GrndØ40-65(54)	2
10	FMWP00596	Shim	ST60x5 - 7	4
11	FMWP00596-02	Shim	ST60x5 - 9	2
12	FMWP00596-07	Shim	PLT5 - 60x60	2
13	FMWP00597	Outside Link C5,3/C6,3	PLT12 - 445x90	2
14	FMWP01100	Lock Washer	PLT8-60x60	7
15	313150	Hydraulic cylinder	90/40-550	1
-	37313940	Sealing kit	Hydr cyl 90/40	1
16	313183	Hydraulic cylinder	90/50-550	1
-	3731309050	Sealing kit	Hydr cyl 90/50	1
17	909147	Slide Bearing	40x44x30 P	2
18	909150	Slide Bearing	50-55-40 P DIN 1494	6
19	930105	Lubricating nipple	1/8 " BSP DIN 71412	6
20	906225	Bolt Hex. Cap	M16x35 fzb DIN 933	7
21	906170	Bolt Hex. Cap	M10x20 fzb DIN 933	9
22	908225	Washer flat	M10 fzb DIN 125	9
23	908620	Washer Spring	M10 fzb DIN 127	9
24	908630	Washer Spring	M16 fzb DIN 127	7

REF: 190927

1.3 OUTERBOOM C6,7 G3 ASM



REF: 190927

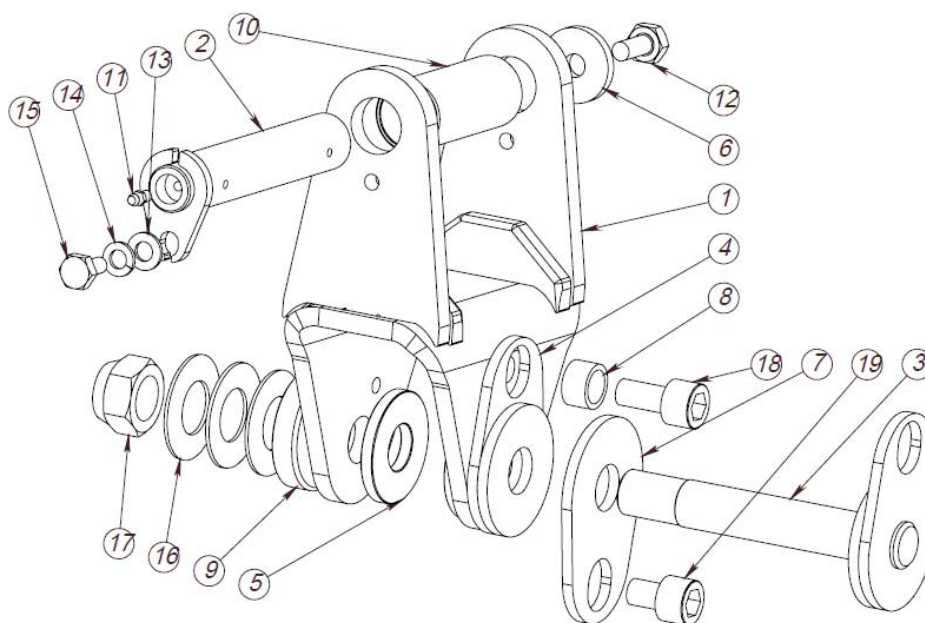
Outerboom C6,7 G3 (FMWA00418)

ITEM NO.	PART NUMBER	DESCRIPTION	TYPE	QTY.
1	FMWA00489	Link C6,7 ASM		1
2	FMWS01051	Hose cover C6,7	-	1
3	FMWS00933	Telescopic boom C6.7		1
4	FMWS00932	Outerboom C6.7		1
5	FMWS01076	Hose holder		1
6	FMWP00612	Glide Piece	PLT10-90x75	3
7	FMWP00612-01	Glide Piece	PLT8-90x75	1
8	FMWP00615	Pin	GrndØ25 - 79,6	1
9	FMWP00618	Pipe holder	PLT6 - 100x30	4
10	FMWP00618-01	Pipe holder	PLT6 - 87x30	3
11	FMWP02936	Pipe protecion	PLT2 - 100x30	8
12	FMWP05430	Shaft	GrndØ25 - 128,60	1
13	FMWP05970	Plate	PLT1-90x86,5	2
14	FMWP05971	Plastic	PLT15-90x90	2
15	FMWP05971-01	Plastic	PLT15-131x90	1
16	FMWP05972	Plate	PLT6-141x81	2
17	FMWP06061	Plate	PLT3-130x108	1
18	FMWP06138	Bushing	Grnd60-28	1
19	FMW10-000000.006	Plastic	Rnd 52-20	1
20	313187	Hydraulic cylinder	50/30 - 1455	1
21	911255	Lock ring	DIN 471 - 25x1,2	4
22	930105	Lubricating nipple	1/8 " BSP DIN 71412	1
23	909150	Slide Bearing	50-55-40 P DIN 1494	2
24	909138	Slide bearing	30-34-20 P DIN 1494	2
25	906175	Bolt Hex. Cap	M10x30 DIN 933	8
26	906149	Bolt Hex. Cap	M6x12 fzb DIN 933	8
27	906154	Bolt Hex. Cap	M8x16 fzb DIN 933	6
28	906165	Bolt Hex. Cap	M8x40 fzb DIN 933	6
29	906168	Bolt Hex. Cap	M8x90 DIN 931	1
30	906169	Bolt Hex. Socket	M8x12 fzb DIN 7991	16
31	906178	Bolt Hex. Socket	M8x16 fzb DIN 7991	3

Original instruction

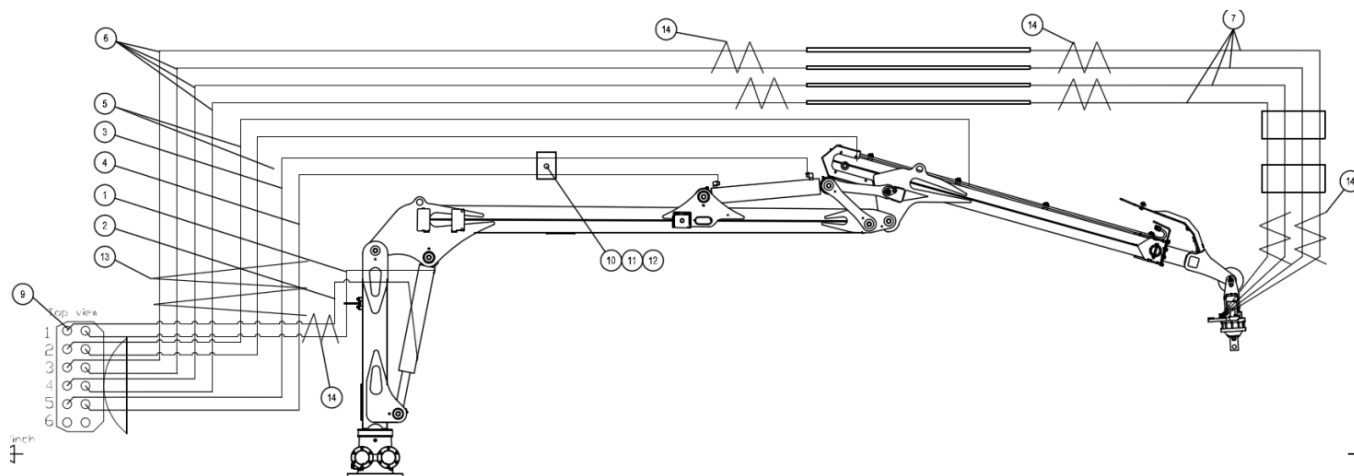
32	908615	Washer Spring	M8 fzb DIN 127	6
33	908221	Washer flat	M8 fzb DIN125	16
34	907212	Nut Hex.	M8 fzb DIN 934	4
35	907213	Nut Hex. Nylock	M8 fzb DIN 985	1
36	906352	Hex. Socket screw	M8x40 DIN 7991	2
ITEM NO.	PART NUMBER	DESCRIPTION	TYPE	QTY.

REF: 190712

1.4 LINK WITH BRAKE C6,7 G3 ASM

REF: 190712
Link C6,7 G3 ASM (FMWA00489)

ITEM NO.	PART NUMBER	DESCRIPTION	TYPE	QTY.
1	FMWS01088	Rotator link C6.7		1
2	FMWS01089	Shaft	GrndØ25-168(157)	1
3	FMWS00351-01	Shaft ASM	-	1
4	FMWS00352	Plate	-	1
5	FMWP00814	Washer	RndØ60 - 7	2
6	FMWP01100-02	Lock Washer	PLT6-40x40	1
7	FMWP01589	Plate	PLT6 - 110x75	1
8	FMWP01590	Bush	STØ25x3,5 - 14	1
9	FMWP01591	Lock washer	PLT2-83x83	1
10	FMWP06093	steel tube	ST38,0x2,9	1
11	930107	Grease nipple	M6 DIN 71412	1
12	906192	Bolt Hex. Cap	M12x25 fzb DIN 933	1
13	908225	Washer flat	M10 fzb DIN 125	1
14	908620	Washer Spring	M10 fzb DIN 127	1
15	906170	Bolt Hex. Cap	M10x20 fzb DIN 933	1
16	920503	Disk spring	56x28,5x2 DIN 2093	3

REF: 190712

2 HYDRAULIC SCHEME C6,7 G3

REF:170324
Hydraulic scheme C6,7 G3 (FMWH00041)

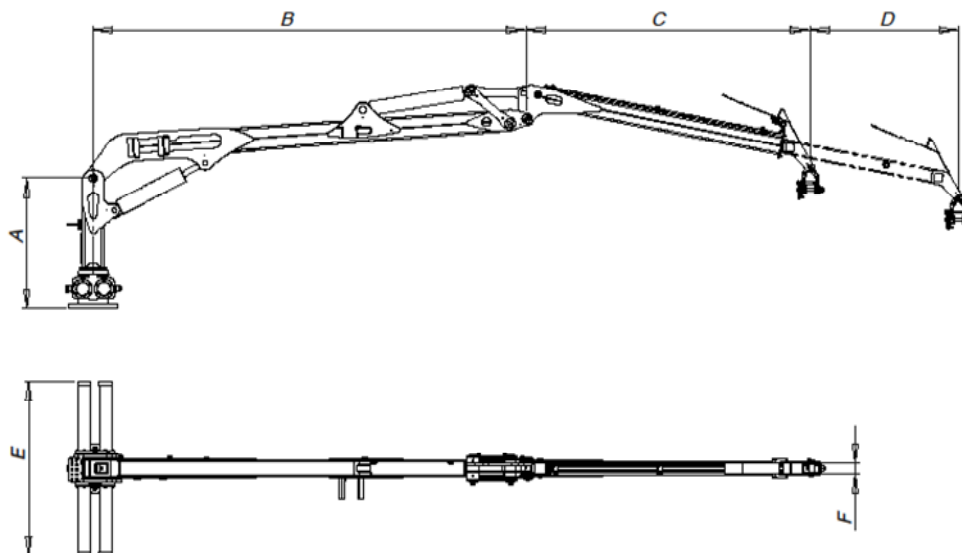
ITEM NO.	PART NUMBER	DESCRIPTION	TYPE	QTY.
1	FMWH00737	Hose	42010606-3/8"(1180)-42010606	1
2	FMWH00738	Hose	42010606-3/8"(1130)-42010606	1
3	FMWH00739	Hose	42010606-3/8"(3400)-42010606	1
4	FMWH00740	Hose	42010606-3/8"(3500)-42010606	1
5	FMWH00741	Hose	42010606-3/8"(4800)-42010606	2
6	FMWH00742	Hose	42010606-3/8"(4870)-42010606	4
7	FMWH00743	Hose	42010606-3/8"(3150)-42050606	4
8	FMWA00468	Hydraulic pipe	ST12x1,5 L=2100	4
9	914750	Cartridge nipple	7090-06-06; G3/8"Mx3/8"M	10
10	909162	Bolt Hex. Cap	M8x60 DIN 931	1
11	914544	Clip double	5390-43-20	2
12	914546	Cover plate	5394-13-01	1
13	930330	SPIRO PIPE	ø 50x3,5 mm yellow	0,9m
14	930320	SPIRO PIPE	ø 32x3 mm yellow	7

REF:170831

Original instruction

3 TECHNICAL SPECIFICATIONS

3.1 MAIN PARTS & DIMENSIONS



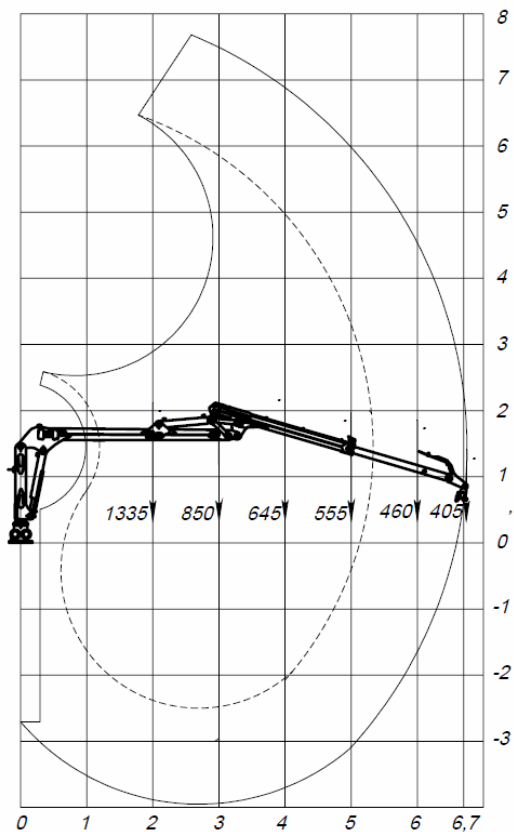
Picture: Boom system with boom extension

Model	A	B	C	D	E	F
C6.7 G3	1445	3270	2055	1455	1270	60

REF: WEB 20180606

3.2 TECHNICAL DATA

FOREST CRANE	C6,7 G3
Lifting torque net, kNm	27
Slewing torque, kNm	10
Slewing angle, °	360
Reach, m	6,7
Telescopic stroke length, m	1,45
Recommended Oil flow, l/min	20 - 50
Working pressure, MPa	19
Weight incl. grapple 0,16*/ Weight of crane (Kg)	720/625
Weight incl. grapple 0,20*/ Weight of crane (Kg)	760/625
Lifting force full length (excl. grapple/rotator) (Kg)	405

REF: WEB 20180606
3.3 LIFTING DIAGRAM

REF:180205