

 **FARMA**®

**Crane**

**C5.0 G3**

EN\_S1.0-2020W05

Original instruction

**SPARE PARTS**

# SPARE PARTS

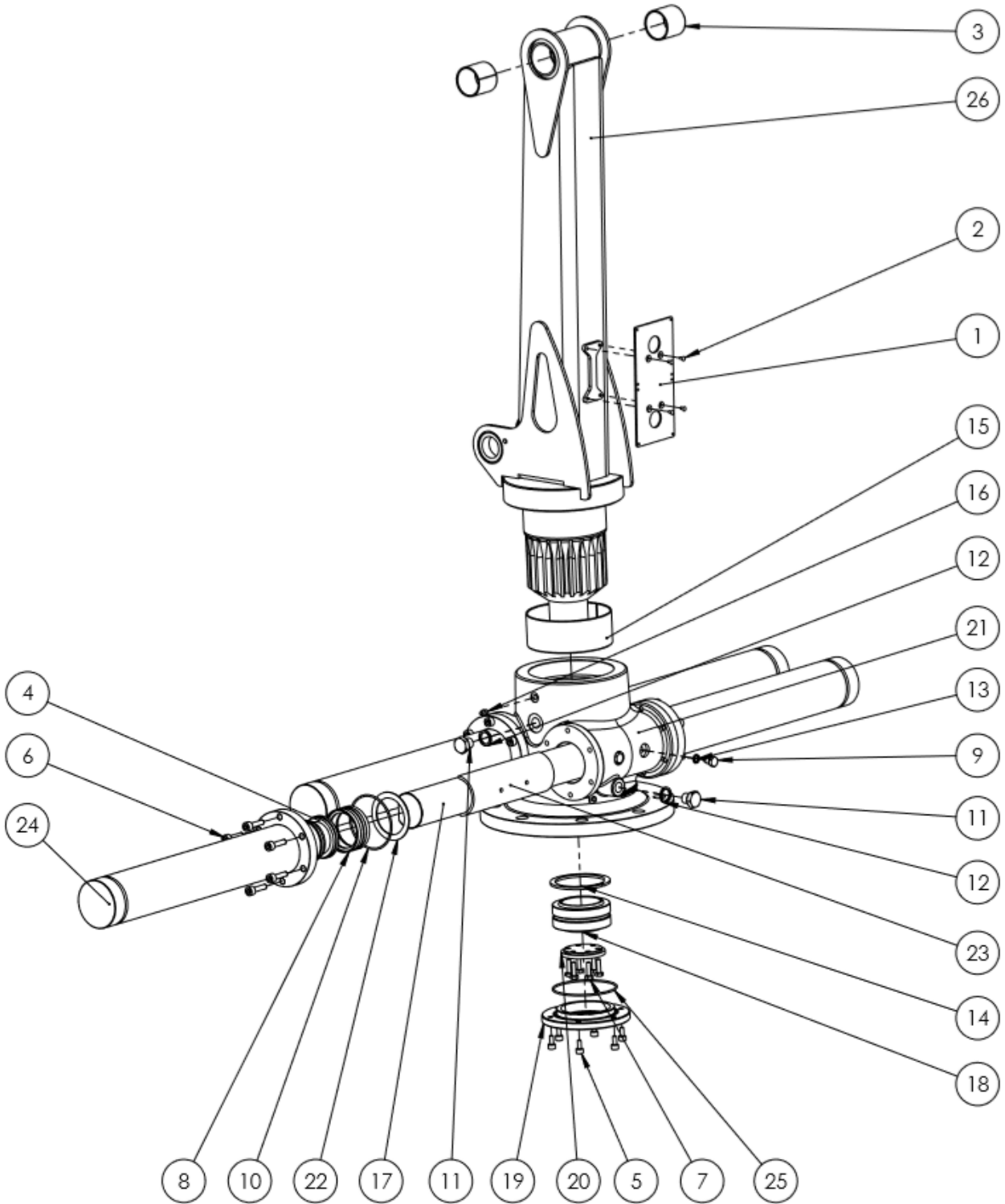
## C5,0 G3

### TABLE OF CONTENTS

1	SPARE PARTS .....	3
1.1	10 kNm TURNHOUSE ASM.....	3
1.2	MAIN BOOM C5,0 G3 ASM.....	5
1.3	OUTERBOOM C5,0 G3 ASM.....	7
1.4	LINK C5,0 ASM.....	10
2	HYDRAULIC SCHEME C5,0 G3.....	11
3	TECHNICAL SPECIFICATIONS .....	12
3.1	MAIN PARTS & DIMENSIONS.....	12
3.2	TECHNICAL DATA.....	13
3.3	LIFTING DIAGRAM .....	13

**1 SPARE PARTS**

**1.1 10 kNm TURNHOUSE ASM**



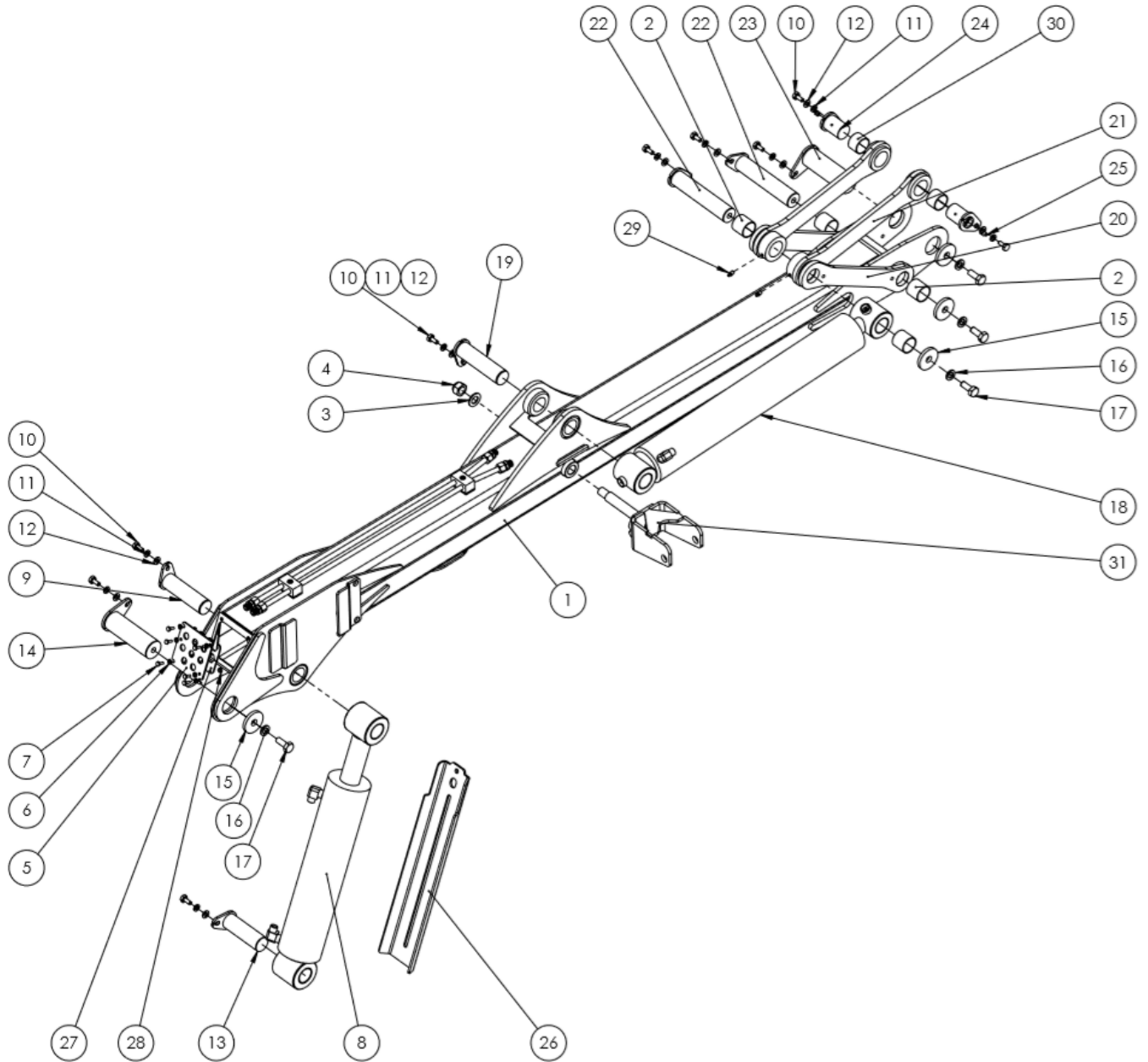
**REF: 190517**

**Turnhouse 10kNm ASM, C5,0 G3 (FMWA00609)**

ITEM NO.	PART NUMBER	DESCRIPTION	TYPE	QTY.
1	FMWP02295 -01	Plate	PLT3 - 224x102	1
2	907584	Blind rivet	d4x8	4
3	909152	Slide Bearing	50-55-50 DIN1494	2
4	FMWP00591	Piston 80	-	4
5	916507	Bolt Hex. Socket	M8x16 DIN 912	6
6	906528	Bolt Hex. Socket	M10x35 DIN 912	24
7	906160	Bolt Hex. Cap	M8x25 fzb DIN 933	6
8	912235	Simco sealing	80x60x22,4	4
9	FMWP05194	Set bolt	HEX17.00xM10.00x1 - 23.00	4
10	912314	O-ring	96,0x3	4
11	914792	Plug 1/2"	7501-00-08	2
12	914584	Rubber seal	08/01/5601	2
13	914578	Rubber seal	5601-01-02; 1/8"	4
14	911141	Lock-ring	105x4 DIN 472	1
15	909119	Slide bearing	150-155-60	1
16	930105	Grease nipple	1/8" DIN 71412	2
17	FMWP04123	Rack 10 kNm	-	2
18	910330	Bearing	GE 70 ES	1
19	FMWP04124	Cover	RND160.00 - 23.00	1
20	FMWP04125	Washer	D80	1
21	FMWP04129	Body	10 kNm	1
22	FMWP04682	Washer	PLT2.00 - 89.00x89.00	4
23	FMWP04843	Slidepad 10kNm	PA6	2
24	312401	Slewing cylinder 10 kNm	80-438	4
25	912237	O-ring	112x3	1
26	FMWS01261	Column C5,0	10 kNm	1

**REF: 190517**

**1.2 MAIN BOOM C5,0 G3 ASM**



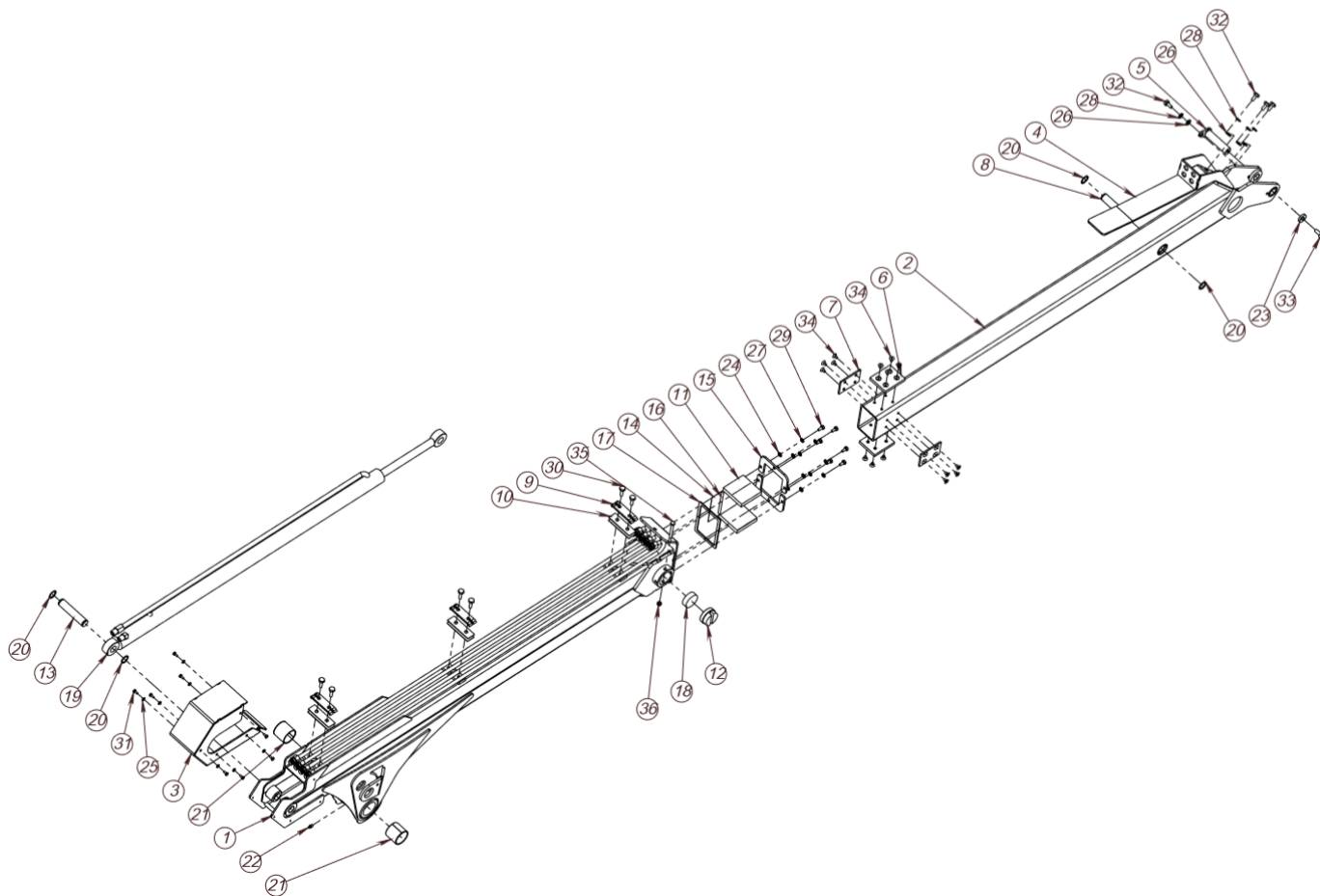
**REF: 190517**

**Main boom ASM, C5,0 G3 (FMWA00602)**

ITEM NO.	PART NUMBER	DESCRIPTION	TYPE	QTY.
1	FMWS01259	Mainboom C5.0	-	1
2	909149	Slide Bearing	40x44x40 P	2
3	908270	Washer flat	M20 fzb DIN 125	1
4	907246	Nut Hex. Nylock	M20 fzb DIN 985	1
5	FMWP07463	Plate	PLT4-120x112	1
6	908218	Washer flat	M6 fzb DIN 125	6
7	906140	Bolt Hex. Cap	M6x16 fzb DIN 933	6
8	313202	Hydraulic cylinder	100/50-365	1
9	FMWS01114	Shaft	GrndØ40 - 152(141)	1
10	906170	Bolt Hex. Cap	M10x20 fzb DIN 933	9
11	908620	Washer Spring	M10 fzb DIN 127	9
12	908225	Washer flat	M10 fzb DIN 125	9
13	FMWS00815	Shaft	GrndØ40-135(124)	1
14	FMWS01274	Shaft	GrndØ50-165(154)	1
15	FMWP01100	Lock Washer	PLT8-60x60	4
16	908630	Washer Spring	M16 fzb DIN 127	4
17	906225	Bolt Hex. Cap	M16x35 fzb DIN 933	4
18	313201	Hydraulic cylinder	90/40 - 560	1
19	FMWS01114-01	Shaft	GrndØ40 - 162(151)	1
20	FMWP07416	Link Outside C5.0	PLT12-420x75	2
21	FMWA00607	C5,0 link asm	-	2
22	FMWS01118	Shaft	GrndØ40-207(196)	2
23	FMWS01275	Shaft	GrndØ50-157(146)	1
24	FMWS00939	Shaft	GrndØ40-65(54)	2
25	930105	Lubricating nipple	1/8 " BSP DIN 71412	2
26	FMWP07455	Plate	PLT5-560x146	1
27	FMWP06652	Plate	PLT3-106x82	1
28	907116	Nut Hex.	M6 fzb DIN 934	2
29	930106	Grease nipple	M8x1,0 straight	2
30	909149	Slide Bearing	40 44 40 P	2
31	FMWS00978-01	Wire block console	C5,0	1

**REF: 190517**

**1.3 OUTERBOOM C5,0 G3 ASM**



**REF: 190517**

**Outerboom C5,0 G3 (FMWA00603)**

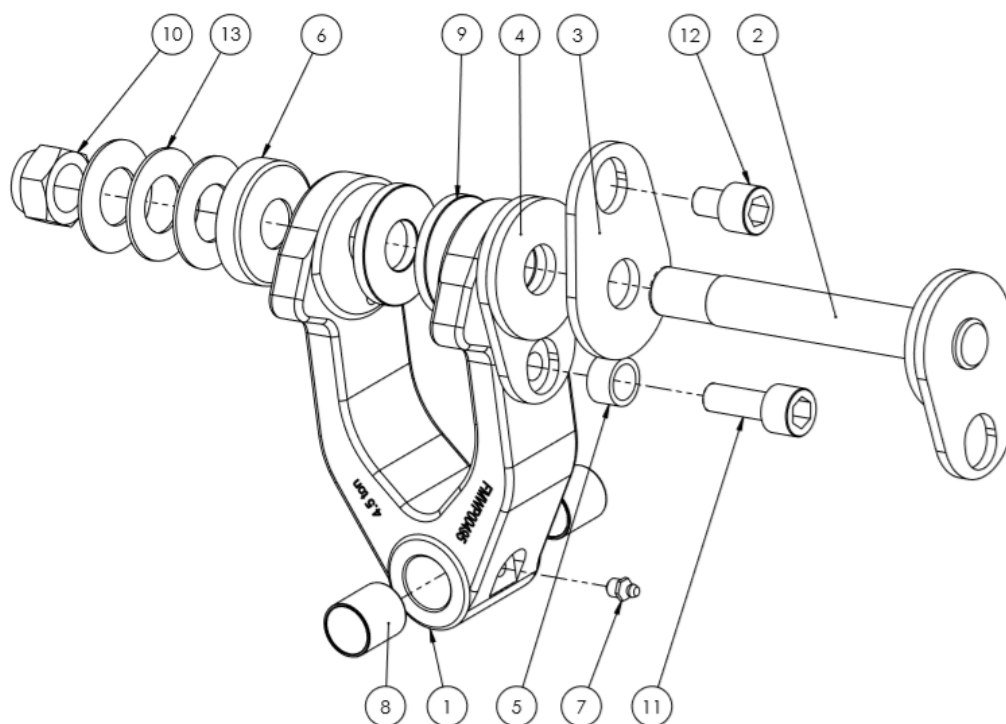
ITEM NO.	PART NUMBER	DESCRIPTION	TYPE	QTY.
1	FMWS01257	Outer boom C5.0	-	1
2	FMWS01256	Tele-boom C5.0	-	1
3	FMWS01270	Hose cover C5,0	-	1
4	FMWS00625-01	Hose holder	C6.3	1
5	FMWS00591	Shaft	GrndØ25h9 - 109(100)	1
6	FMWP00612	Glide Piece	PLT10-90x75	2
7	FMWP00613	Glide Piece	-	2
8	FMWP00615	Pin	GrndØ25 - 79,6	1
9	FMWP00618	Pipe holder	PLT6 - 100x30	3
10	FMWP02936	Pipe protecion	PLT2 - 100x30	6
11	FMWP05971	Plastic	PLT15-90x90	2
12	FMWP06138	Bushing	Grnd60-28	1
13	FMWP06198	Shaft	GrndØ25 - 120	1
14	FMWP06404	Plate	PLT1-125x90	1
15	FMWP06405	Plate	PLT6-131x80	2
16	FMWP06419	Plastic	PLT10-112x90	1
17	FMWP07411	Plate	PLT3-148x50	2
18	FMW10-000000.006-1	Plastic	Rnd 52-17	1
19	913215	Hydraulic cylinder	40/25-1100	1
20	911255	Lock ring	DIN 471 - 25x1,2	4
21	909152	Slide Bearing	50-55-50 DIN1494	2
22	930106	Grease nipple	M8x1 DIN 71412	1
23	907537	Heavy Duty Flat Washer	M12 fzb DIN 7349	1
24	908221	Washer flat	M8 fzb DIN125	6
25	908218	Washer flat	M6 fzb DIN 125	8
26	908225	Washer flat	M10 fzb DIN 125	4
27	908615	Washer Spring	M8 fzb DIN 127	6
28	908620	Washer Spring	M10 fzb DIN 127	4
29	906154	Bolt Hex. Cap	M8x16 fzb DIN 933	6
30	906175	Bolt Hex. Cap	M10x30 DIN 933	6
31	906149	Bolt Hex. Cap	M6x12 fzb DIN 933	8



*Original instruction*

32	906170	Bolt Hex. Cap	M10x20 fzb DIN 933	4
33	906192	Bolt Hex. Cap	M12x25 fzb DIN 933	1
34	906169	Bolt Hex. Socket	M8x12 fzb DIN 7991	16
35	906168	Bolt Hex. Cap	M8x90 DIN 931	1
36	907213	Nut Hex. Nylock	M8 fzb DIN 985	1
ITEM NO.	PART NUMBER	DESCRIPTION	TYPE	QTY.

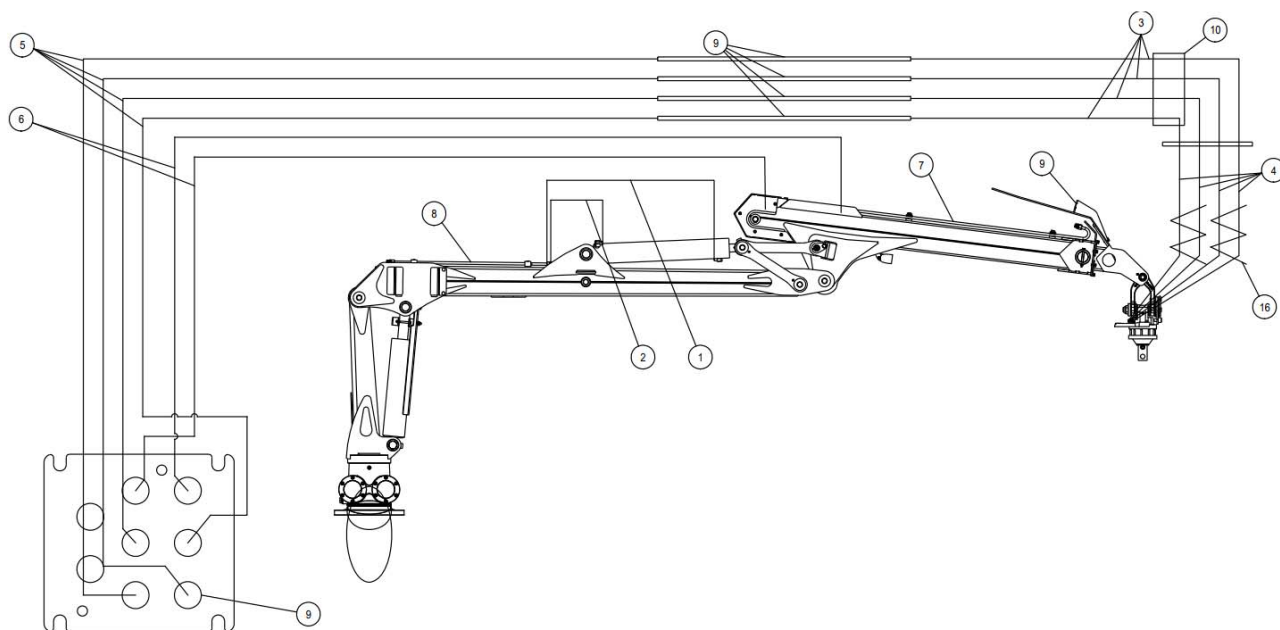
**REF: 190517**

**1.4 LINK C5,0 ASM**

**REF: 190517**
**Link C5,0 ASM (FMWA00064)**

ITEM NO.	PART NUMBER	DESCRIPTION	TYPE	QTY.
1	FMWP00495	Rotator link 60	-	1
2	FMWS00351	Shaft ASM	-	1
3	FMWP01589	Plate	PLT6 - 110x75	1
4	FMWS00352	Plate	-	1
5	FMWP01590	Bush	STØ25x3,5 - 14	1
6	FMWP01591	Lock washer	PLT2-83x83	1
7	930105	Grease nipple	1/8" DIN 71412	1
8	909135	Slide bearing	25 28 30 P	2
9	FMWP00814	Washer	RndØ60 - 7	2
10	907242	Nut Hex. Nylock	M24x1,5 fzb DIN 985	1
11	906541	Bolt Hex. Socket	M16x40 DIN 912	1
12	906532	Bolt Hex. Socket	M16x20 DIN 912 Zn	1
13	920503	Disk spring	56x28,5x2 DIN 2093	3

**REF: 190517**

## 2 HYDRAULIC SCHEME C5,0 G3



REF: 200529

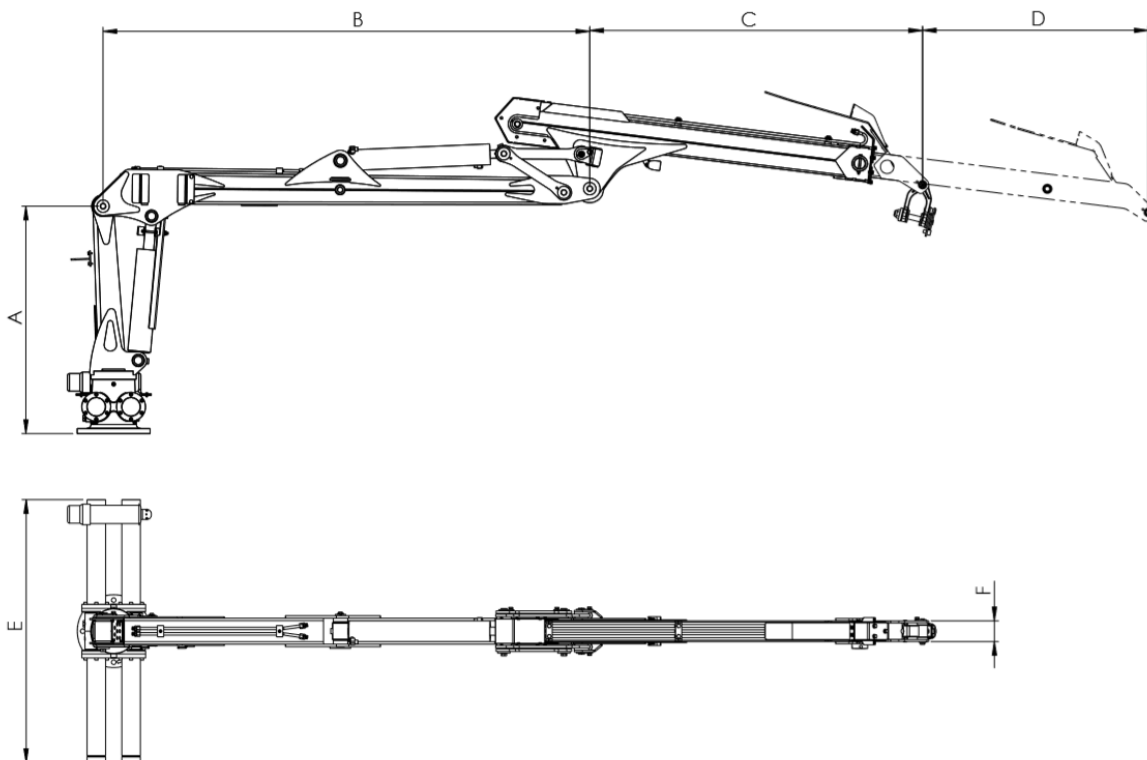
### Hydraulic scheme C5,0 G3 (FMWH00044)

ITEM NO.	PART NUMBER	DESCRIPTION	TYPE	QTY.
1	FMWH00783	Hose	42010606-3/8(780)-42010606	1
2	FMWH00784	Hose	42010606-3/8(680)-42010606	1
3	FMWH00785	Hose	42010606-3/8(1750)-42010606	4
4	FMWH00786	Hose	42010606-3/8(1080)-42030606	4
5	FMWH00787	Hose termoplast	42010606-3/8(3170)-42010606	4
6	FMWH00788	Hose termoplast	42010606-3/8(3100)-42010606	2
7	FMWA00500	Hydraulic pipe	ST12x1,5 L=1670	4
8	FMWA00508	Hydraulic pipe	ST12x1,5 L=800	2
9	914750	Cartridge nipple	7090-06-06; G3/8"Mx3/8"M	10
10	914630	PVC water hose	1405-00-48; 75mm	1750 mm
11	906164	Bolt Hex. Cap	M8x35 DIN 933	2
12	914562	Clip double	5390-42-14	2
13	914566	Cover plate	5394-13-01	2
16	930320	SPIRO PIPE	ø 32x3 mm yellow	2,0 m

REF:200128

### 3 TECHNICAL SPECIFICATIONS

#### 3.1 MAIN PARTS & DIMENSIONS



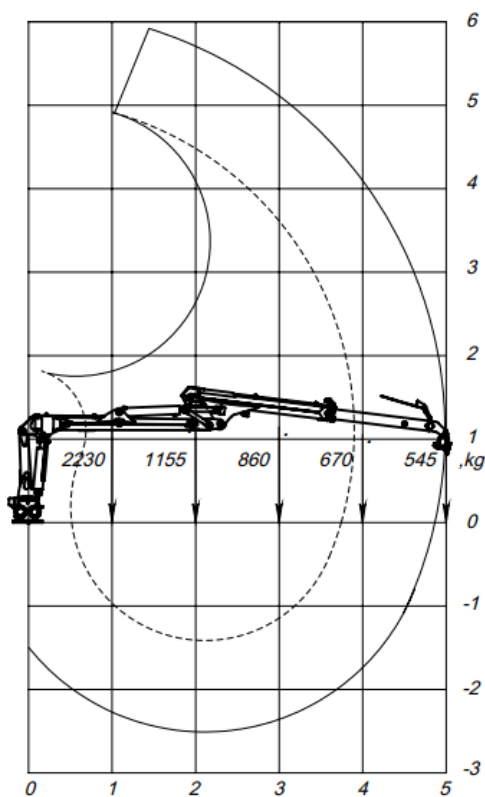
Picture: Boom system with boom extension

Model	A	B	C	D	E	F
<b>C5,0</b>	1100	2350	1605	1090	1270	100

**REF: 190517**

**3.2 TECHNICAL DATA**

FOREST CRANE	C5,0 G3
Lifting torque net, kNm	28
Slewing torque, kNm	8,8
Slewing angle, °	360
Reach, m	5,0
Telescopic stroke length, m	1,1
Recommended Oil flow, l/min	20 - 50
Working pressure, MPa	19
Weight incl. grapple 0,12/ Weight of crane (Kg)	565/495
Weight incl. grapple 0,16/ Weight of crane (Kg)	590/495
Lifting force full length (excl. grapple/rotator) (Kg)	544

**REF: 200128**
**3.3 LIFTING DIAGRAM**

**REF:200128**